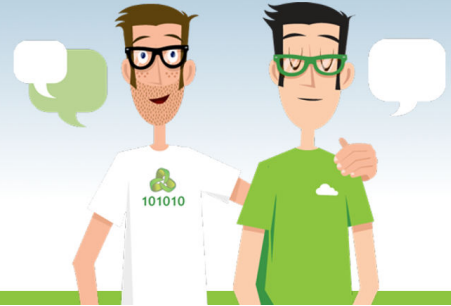


# Community Home

## Welcome to the Community



Opmantek produce the world's leading Open Source Network Management and Auditing Software, NMIS and Open-Audit.

The Opmantek community is a gathering place for NMIS and Open-Audit users who wish to customise, support and contribute to the community products.

There are hundreds of articles, how-to's and posts within the community to help you, use the search bar below to start exploring.

If you have a specific question, you can post it in the [community forums](#).

### Community Forums

#### Recent Questions

##### CentOS 8 Support & Install

0 answers • Jared Simpkins • Jul 29, 2020 • Space: [Open-Audit](#)

• [open-auditupgrade](#)

##### definition of the xml from RRD file

0 answers • Dean Forster • Jul 24, 2020 • Space: [Community](#)

• [nmis](#)

##### Unable to update linux devices after 3.3.2 update

3 answers • Alex Szele • Jul 21, 2020 • Space: [Open-Audit](#)

• [open-auditlinux](#)

##### Could not convert audit result from XML.

3 answers • Jonathan Kyek • Jul 16, 2020 • Space: [Open-Audit](#)

• [open-auditdiscoveryerror](#)

##### When an item (a computer) is updated manually after a discovery, how can I said to Open-Audit to not update this item?

1 answer • Pierre-Hugues Dorais • Jul 07, 2020 • Space: [Open-Audit](#)

• [discoveryopen-audit](#)

##### Logs error

1 answer • tacop • Jul 02, 2020 • Space: [Open-Audit](#)

• [logs](#)

### Training and Webinars

#### On Demand Webinars:

We know you are busy and can't always find time to attend a live webinar, so our most popular webinars are available 'On-Demand'. Click the links below to access a pre-recorded session that you can watch in your own time:

- [NMIS Setup and Configuration](#)
- [Open-Audit Setup and Configuration](#)
- [Managing Change and Compliance with NMIS, opConfig and Open-Audit](#)
- [NMIS - Top 10 Features You Can't Live Without](#)
- [Open-Audit - Top 10 Features You Can't Live Without](#)

#### Live Webinars:

To help you get the most out of NMIS and Open-Audit Opmantek regularly run FREE Webinars. Check in here regularly for dates and session times.

## NMIS

NMIS an open source Network Management Software application that has been developed since 1998, has been implemented globally by internet download and is used by approximately 20,000 organisations around the world.

NMIS is continually updated and remains open source.

It is a complete network management system which assists with fault, performance and configuration management, providing performance graphs and threshold alerting as well as highly granular notification policies with many types of notification methods.

- [Download NMIS from Opmantek](#)
- [Download NMIS VM from Opmantek](#)
- [Download NMIS VM Bundle from Opmantek](#) (includes NMIS, Open-audit and all downloadable commercial modules)
- [Download NMIS from Github](#)
- [Explore NMIS Documentation](#)

## Open-Audit

Open-Audit intelligently scans an organization's network and stores the configurations of the discovered devices.

A powerful reporting framework enables information such as software licensing, configuration changes, non-authorized devices, capacity utilization and hardware warranty status to be extracted and explored.

Open-Audit is also available in an enterprise version containing additional features such as Business Dashboards, Report filtering, Scheduled discovery, Scheduled Reports and Maps.

- [Download Open-Audit from Opmantek](#)
- [Download Open-Audit from open-audit.org](#)
- [Explore Open-Audit Documentation](#)
- [Open-Audit Community vs Enterprise Comparison Chart](#)
- [Visit the open-audit.org forums](#)

## NMIS Extensions

Opmantek develop commercial modules that extend the products with additional features like reports, charts and dashboards. Purchases of licenses for these products allow us to continue supporting and developing the Free Open Source products.

- [opEvents](#) - Event Management working like ITIL V3 intended. Managing syslog, SNMP trap, NMIS events and any log content.
- [opCharts](#) - Modern, dynamic, interactive charting, custom dashboards and a RESTful API for all NMIS data and more.
- [opFlow](#) - Application level visibility using NetFlow information, providing incredible visibility into bandwidth usage, by user and application.
- [opReports](#) - Expert reporting, with traffic lights and actions.
- [opSLA](#) - Enhanced IPSLA engine for 10000's of IPSLA probes on a single server.
- [opHA](#) - High availability for NMIS through Master/Slave and Multi-Master configurations.
- [opConfig](#) - Automatically track and back up configurations. Compare configurations.

## Latest from the Wiki



[Robin Twiggs](#)

[Reducing a Server's Memory Footprint when OMK applications are installed](#) updated yesterday at 8:19 PM • [view change](#)

[James Greenwood](#)

[opCharts Release Notes](#) updated Aug 04, 2020 • [view change](#)



[Robin Twiggs](#)

[Opmantek NMIS9 Virtual Appliance: Release Notes](#) updated Aug 03, 2020 • [view change](#)

[Opmantek NMIS8 Virtual Appliance: Release Notes](#) updated Aug 03, 2020 • [view change](#)

[Opmantek Virtual Appliance: Installation and Getting Started](#) updated Aug 03, 2020 • [view change](#)

## Join the conversation on Twitter

