

Home

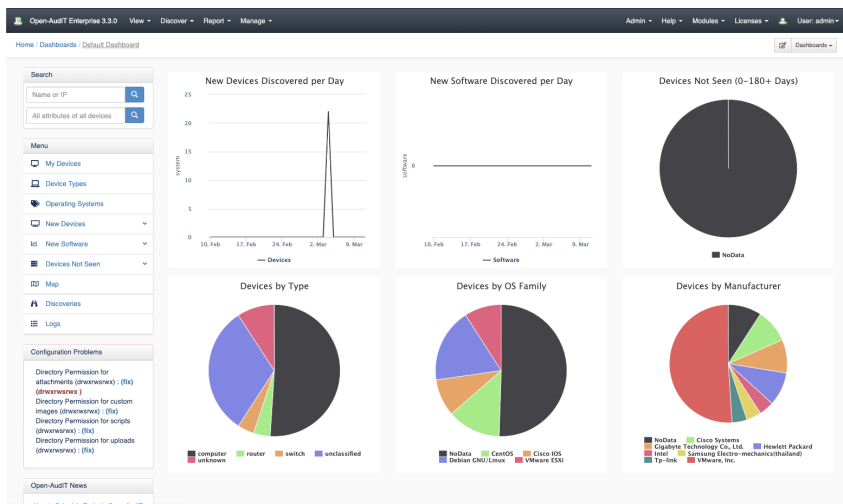


What is Open-Audit?

Open-Audit is a discovery, audit and asset tracking and reporting system.

What does Open-Audit do?

Open-Audit tells you exactly what is on your network, how it is configured and when it changes. Open-Audit is designed to be run on a server (Windows or Linux) and to scan your networks for devices. Once a device is found, Open-Audit runs a series of commands upon it and stores the resulting data in a database. This data is then available for various reporting purposes. Open-Audit comes with a list of over 50 reports with any number of additional reports able to be created by the user.



Open-Audit Enterprise 3.3.0 Dashboard - Resources (All Devices)

System ID	System Icon	System Type	System Name	System IP	System OS FQDN	System OS Family	System Status	System Class
win2012-4802	Computer	computer	win-8869a9e0e	10.0.2.15	Windows 2012	Windows 2012	production	server
win2012-4801	Computer	computer	win-21217b.150	172.16.17.150	Windows 2012	Windows 2012	production	virtual server
win2012-4802	Computer	computer	win-21217b.152	172.16.17.152	Windows 2012	Windows 2012	production	virtual server
gateway	Gateway	gateway	192.168.1.1	192.168.1.1	EdgeOS	EdgeOS	production	server
win	Computer	computer	win	192.168.88.1	win.opnmax.com	Windows 2012	production	server
ubuntu	Computer	computer	192.168.88.8	192.168.88.8	Ubuntu	Ubuntu	production	server
mysql	Computer	computer	mysql	192.168.88.7	mysql.opnmax.com	Debian	production	server
thr	Computer	computer	thr	192.168.88.8	thr.opnmax.com	CentOS	detected	virtual server
thr	Computer	computer	thr	192.168.88.8	thr.opnmax.com	CentOS	production	virtual server
es	Computer	computer	es	192.168.88.9	es	VMware ESXi	detected	server

Open-Audit Enterprise 3.3.0 Dashboard - Processor

View Entry	View Device	View CPU	Device Name	Current	First Seen	Last Seen	Name	Physical Count	Core Count	Logical Count	Description	Speed	Manufacturer	Architecture	Socket	Hyperthreading
win2012-4802	win2012-4802	win2012-4802	win-8869a9e0e	y	2020-02-09 09:12:20	2020-02-09 09:12:20	Intel Core i5-2320M CPU @ 2.90GHz	2	2	2	Intel Core i5-2320M CPU @ 2.90GHz	2494	Intel	x86	ZIF Socket	n
win2012-4801	win2012-4801	win2012-4801	win-21217b.150	y	2020-02-09 09:30:38	2020-02-09 09:30:38	Intel Core i5-2320M CPU @ 2.90GHz	2	2	2	Intel Core i5-2320M CPU @ 2.90GHz	2494	Intel	x86	ZIF Socket	n
win-8869a9e0e	win-8869a9e0e	win-8869a9e0e	win-8869a9e0e	y	2020-02-09 07:31:03	2020-02-09 07:31:03	Intel Core i7-4770K CPU @ 3.40GHz	1	4	4	Intel Core i7-4770K CPU @ 3.40GHz	4058	Intel	x86	Unknown	n
win	win	win	win	y	2020-02-12 22:30:07	2020-02-12 22:30:07	Intel Core i7-7700 CPU @ 3.60GHz	1	1	1	Intel Core i7-7700 CPU @ 3.60GHz	3800	Intel	x86	ZIF Socket	n
thr	thr	thr	thr	y	2020-02-12 20:02:03	2020-02-12 20:02:03	Intel Core i7-4770 CPU @ 3.40GHz	2	2	2	Intel Core i7-4770 CPU @ 3.40GHz	3382	Intel	x86	ZIF Socket	n
thr	thr	thr	thr	y	2020-02-12 15:48:17	2020-02-12 15:48:17	Intel Core i7-4770 CPU @ 3.40GHz	2	2	2	Intel Core i7-4770 CPU @ 3.40GHz	3382	Intel	x86	ZIF Socket	n
mysql	mysql	mysql	mysql	y	2020-02-12 20:02:06	2020-02-12 20:02:06	Intel Core i7-4770 CPU @ 3.40GHz	2	2	2	Intel Core i7-4770 CPU @ 3.40GHz	3382	Intel	x86	ZIF Socket	n
es	es	es	es	y	2020-02-12 20:02:08	2020-02-12 20:02:08	Intel Core i7-4770 CPU @ 3.40GHz	2	2	2	Intel Core i7-4770 CPU @ 3.40GHz	3382	Intel	x86	ZIF Socket	n
es	es	es	es	y	2020-02-12 20:02:08	2020-02-12 20:02:08	Intel Core i7-7700 CPU @ 3.60GHz	1	4	8	Intel Core i7-7700 CPU @ 3.60GHz	4000	Intel	x86_64	Other	y
es	es	es	es	y	2020-02-12 20:02:08	2020-02-12 20:02:08	Intel Core i7-7700 CPU @ 3.60GHz	2	2	2	Intel Core i7-7700 CPU @ 3.60GHz	3800	Intel	x86	ZIF Socket	n

more

Release Notes

Blog Posts

- Blog: [Open-Audit 4.0.0](#) created by Mark Unwin Oct 29, 2020 Open-Audit
- Blog: [Recently reported vulnerabilities within Open-Audit](#) created by Mark Unwin Open-Audit May 05,

- Release Notes for Open-Audit v4.0.1 — Released 2020-11-24
- Release Notes for Open-Audit v4.0.0 — Released 2020-10-29
- Release Notes for Open-Audit v3.5.0 — Released 2020-10-02
- Release Notes for Open-Audit v3.4.0 — Released 2020-07-21
- Release Notes for Open-Audit v3.3.2 — Released 2020-05-05

more

2020

- Blog: [Open-Audit 3.3.0](#) created by Mark Unwin Feb 21, 2020 Open-Audit
- Blog: [Apache and ModSecurity](#) created by Mark Unwin Jan 14, 2020 Open-Audit
- Blog: [Rules for Open-Audit](#) created by Mark Unwin Sep 02, 2019 Open-Audit
- Blog: [Using Postman to query the Open-Audit API](#) created by Mark Unwin Open-Audit Jun 16, 2019
- Blog: [Device SubSection Data Retention Options](#) created by Mark Unwin Open-Audit Jun 16, 2019
- Blog: [Open-Audit 3.1.0 released](#) created by Mark Unwin Open-Audit Jun 16, 2019
- Blog: [The Default Network Address](#) created by Mark Unwin Open-Audit Jun 16, 2019
- Blog: [Open-Audit v3.0.0 released](#) created by Mark Unwin Open-Audit Feb 20, 2019

[more](#)

Download

Open-Audit is available as a stand-alone [download](#) or part of the Opmantek [virtual appliance](#).

[Release Notes](#), [Errata](#) and [Support Info](#).

Install

[How To Install or Upgrade Open-Audit \(Windows\)](#)

[How To Install or Upgrade Open-Audit \(Linux\)](#)

[Installing on Oracle Linux 7.6](#)

[Installing awscli package on RedHat 7](#)

Getting Started

[Getting Started](#)

[Opmantek Virtual Appliance: Installation and Getting Started](#)

[Configuration](#)

Information

[What is Open-Audit](#)

[Introduction to Open-Audit Community](#)

[Introduction to Open-Audit Professional & Enterprise](#)

[Open-Audit Community versus Professional & Enterprise](#)

[What is Open-Audit Cloud?](#)

More information about [Opmantek](#) and our products and services available on our website.

Documentation

These detailed guides, webinars, and blogs break down configuring Open-Audit into manageable tasks and sub-tasks. These guides are designed to be followed *after* you have installed Open-Audit and confirmed it is operating.

How-To Guides

- [Baselining Devices for Consistency and Standardization](#)
- [Building your Network Discovery](#)
- [Collector server creation](#)
- [Creating, Populating, and Reporting on Custom Fields](#)
- [Creating Custom Reports](#)
- [Leveraging Locations to Speed Up Searching and Display](#)
- [Monitoring Files for Changes](#)
- [Organizing your Devices and Users](#)
- [Software Asset Management](#)

Webinars

- [Webinar - Architecting OAE as a Large Scale CMDB Solution](#)
- [Webinar - Top-10 Features You Need](#)
- [Webinar - Using Active Directory for Authentication](#)

Blog entries

- [Blog - 20 Years of Open-Audit](#)
- [Blog - Finding Devices with Custom Queries](#)
- [Blog - Open-Audit and the GDPR](#)
- [Case Studies](#)

API Related

[Using Postman to query the Open-Audit API](#)

[API Examples for Postman](#)

[The Open-Audit API](#)

Discover

Getting device information into Open-Audit.

How-To

- [Target Client Configuration](#)
- [Running Open-Audit Apache Service under Windows](#)
- [Items affecting Discovery times](#)
- [Import / Export devices in various formats](#)
- [How to use Open-Audit Discovery on a Subnet](#)
- [How to use Active Directory Discovery](#)
- [How to discover a single Device](#)
- [How to Audit in complex network environments](#)
- [How to audit a Computer](#)
- [Discovery - Community vs Professional vs Enterprise](#)
- [Credentials for Microsoft Azure used in Cloud Discovery](#)
- [Credentials for Amazon AWS used in Cloud Discovery](#)
- [Configuring Open-Audit with HTTPS/SSL](#)
- [Collector / Server](#)
- [Auditing Linux without root](#)

About

- [Blessed Subnets](#)
- [Matching Devices](#)
- [Nmap Options](#)
- [Open-Audit and Nmap](#)
- [SNMP unknown devices](#)
- [What Operating Systems will the audit scripts run on?](#)
- [Which attributes for each device type?](#)
- [Why Can't Windows Open-Audit Discover Itself?](#)

Collections

- [Clouds](#)
 - [Collectors](#)
 - [Credentials](#)
 - [Discoveries](#)
 - [Discovery Scan Options](#)
 - [Files](#)
 - [Networks](#)
 - [Scripts](#)
 - [Tasks](#)
-

Report

Reporting on the information you have collected.

How-To

- [Create a Query containing Custom Fields](#)
- [Creating a Query](#)
- [How to Schedule Tasks in Open-Audit](#)

About

- [How Do Reports, Queries and Summaries Work?](#)

Collections

- [Database](#)
 - [Fields](#)
 - [Groups](#)
 - [Licenses](#)
 - [Queries](#)
 - [Reports](#)
 - [Summaries](#)
 - [Tasks](#)
-

Manage

Managing collections of items.

How-To - General

- [Configuring Maps](#)

About - General

- [How do Dashboards and Widgets work?](#)

Collections - General

- [Applications](#)
- [Attributes](#)
- [Connections](#)
- [Dashboards](#)
- [Integrations](#)
- [Locations](#)
- [Networks](#)
- [Orgs](#)
- [Racks](#)
- [Widgets](#)

How-To - Devices

- [Delete a Device](#)
- [How to Bulk Edit device attributes](#)
- [How to import devices from and export devices to NMIS](#)
- [How to import devices using a spreadsheet](#)
- [How to import NMIS Nodes and run discovery upon them](#)

About - Devices

- [Changes](#)
- [DB Schema - component tables](#)
- [DB Schema - system table](#)
- [Information about software keys](#)
- [Matching Devices](#)
- [Overwriting Device Attributes \(or not\)](#)

Collections - Devices

- [Applications](#)
- [Attributes](#)
- [Devices](#)
- [Fields](#)
- [Integrations](#)
- [Locations](#)
- [Orgs](#)

How-To - Users

- [How to Enable LDAP Authentication and Authorization for Open-Audit](#)

About - Users

- [Users, Roles and Orgs - how does it work?](#)

Collections - Users

- [LDAP_Servers](#)
 - [Orgs](#)
 - [Roles](#)
 - [Users](#)
-

Administration

Supporting documentation about the Open-Audit application itself.

How-To

About

Collections

- [Backup and Restore](#)
- [Configuring Open-Audit with HTTPS/SSL](#)
- [How to Enable LDAP Authentication and Authorization for Open-Audit](#)
- [Information about how to get data into Open-Audit](#)
- [MySQL hints](#)
- [Reset, Backup and Restore the Open-Audit database](#)
- [Cross Site Request Forgery \(CSRF\) implementation](#)
- [DB Schema - component tables](#)
- [DB Schema - system table](#)
- [Errata for Open-Audit releases](#)
- [Information about default users and passwords](#)
- [Information about Network Ports](#)
- [Information about Printers](#)
- [Information about software keys](#)
- [Information about the architecture of Open-Audit](#)
- [Release Notes](#)
- [Scalability](#)
- [Security Updates](#)
- [Server Requirements](#)
- [Storing Credentials \(encryption\) in Open-Audit](#)
- [The Open-Audit API](#)
- [Configuration](#)
- [Database](#)
- [LDAP_Servers](#)
- [Logs](#)

Troubleshooting

- [Auditing Windows machines from Linux using SMB2](#)
- [MySQL total number of locks exceeded](#)
- [Troubleshooting](#)
- [Troubleshooting LDAP logins](#)

Deprecated

[Navigate space](#)

Recently Updated

[Release Notes for Open-Audit v4.0.1](#)

Nov 30, 2020 • updated by Mark Unwin • [view change](#)

[Screenshot at 2020-11-30 10-30-02.png](#)

Nov 30, 2020 • attached by Mark Unwin

[Release Notes for Open-Audit v3.3.0](#)

Nov 19, 2020 • updated by Daniel Carter • [view change](#)

[Home](#)

Nov 19, 2020 • updated by Daniel Carter • [view change](#)

[Errata - 4.0.0](#)

Nov 18, 2020 • updated by Mark Unwin • [view change](#)

[Re: Audit log shows 1000 audits](#)

Nov 12, 2020 • created by Phil

[Re: Audit log shows 1000 audits](#)

Nov 12, 2020 • updated by Phil

[Re: Audit log shows 1000 audits](#)

Nov 12, 2020 • created by Mark Unwin

[Audit log shows 1000 audits](#)

Nov 12, 2020 • updated by Phil

[Information about Network Ports](#)

Nov 11, 2020 • updated by Nick Day • [view change](#)

[Collector / Server](#)

Nov 11, 2020 • updated by Nick Day • [view change](#)

[Getting Started](#)

Nov 10, 2020 • updated by Mark Unwin • [view change](#)

[Re: How do I correct the hour of the clock to be in my time zone?](#)

Oct 30, 2020 • created by SouthwestUSA

[Re: How do I correct the hour of the clock to be in my time zone?](#)

Oct 29, 2020 • created by SouthwestUSA

[Re: How do I correct the hour of the clock to be in my time zone?](#)

Oct 29, 2020 • created by Mark Unwin

