

Home

Open-Audit is a discovery, audit and asset tracking and reporting system.

Open-Audit tells you exactly what is on your network, how it is configured and when it changes. Open-Audit is designed to be run on a server (Windows or Linux) and to scan your networks for devices. Once a device is found, Open-Audit runs a series of commands upon it and stores the resulting data in a database. This data is then available for various reporting purposes. Open-Audit comes with a list of over 50 reports with any number of additional reports able to be created by the user.

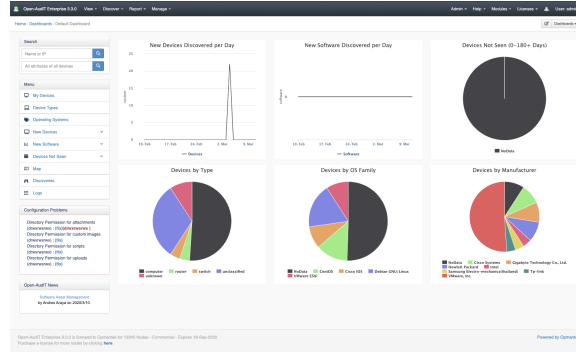


Table of Contents

- [Getting Started](#)
 - [Download](#)
 - [Install](#)
 - [Basic Setup](#)
 - [Open-Audit Information](#)
- [Key Documentation](#)
 - [Discover](#)
 - [Report](#)
 - [Manage](#)
 - [Administer](#)
- [Additional Documentation](#)
 - [Additional How-To Guides](#)
 - [Webinars](#)
 - [Blog entries](#)
 - [Open-Audit API](#)
 - [Recently Updated](#)

Search Open-Audit Wiki

Release Notes

- [All versions](#)

Getting Started

Download

Open-Audit is available as a stand-alone [download](#) or part of the Opmantek [virtual appliance](#).

- [Errata](#)
- [Support Info](#)

Install

- [How To Install or Upgrade Open-Audit \(Windows\)](#)
- [How To Install or Upgrade Open-Audit \(Linux\)](#)
- [Installing on Oracle Linux 7.6](#)
- [Installing awscli package on RedHat 7](#)

Basic Setup

- [Getting Started](#)
- [Opmantek Virtual Machine: Installation and Getting Started](#)
- [Open-Audit Configuration](#)

Open-Audit Information

More information about [Opmantek](#) and our products and services available on our [website](#).

- [What is Open-Audit](#)
 - [Introduction to Open-Audit Community](#)
 - [Introduction to Open-Audit Professional & Enterprise](#)
 - [Open-Audit Community versus Professional & Enterprise](#)
 - [What is Open-Audit Cloud?](#)
-

Key Documentation

These detailed guides, webinars, and blogs break down configuring Open-Audit into manageable tasks and sub-tasks.

Discover

Getting device information into Open-Audit.

How-To

- [Target Client Configuration](#)
- [Running Open-Audit Apache Service under Windows](#)
- [Items affecting Discovery times](#)
- [Import / Export devices in various formats](#)
- [How to use Open-Audit Discovery](#)
- [How to use Active Directory Discovery](#)
- [How to discover a single Device](#)
- [How to Audit in complex network environments](#)
- [How to audit a Computer](#)
- [Discovery - Community vs Professional vs Enterprise](#)
- [Credentials for Microsoft Azure used in Cloud Discovery](#)
- [Credentials for Amazon AWS used in Cloud Discovery](#)
- [Configuring Open-Audit with HTTPS/SSL](#)
- [Collector / Server](#)
- [Auditing Linux without root](#)

About

- [Blessed Subnets](#)
- [Matching Devices](#)
- [Nmap Options](#)
- [Open-Audit and Nmap](#)
- [SNMP unknown devices](#)
- [What Operating Systems will the audit scripts run on?](#)
- [Which attributes for each device type?](#)
- [Why Can't Windows Open-Audit Discover Itself?](#)

Collections

- [Clouds](#)
 - [Collectors](#)
 - [Credentials](#)
 - [Discoveries](#)
 - [Discovery Scan Options](#)
 - [Files](#)
 - [Networks](#)
 - [Scripts](#)
 - [Tasks](#)
-

Report

Reporting on the information you have collected.

How-To

- [Create a Query containing Custom Fields](#)
- [Creating a Query](#)
- [How to Schedule Tasks in Open-Audit](#)

About

- [How Do Reports, Queries and Summaries Work?](#)

Collections

- [Database](#)
- [Fields](#)
- [Groups](#)

- [Licenses](#)
 - [Queries](#)
 - [Reports](#)
 - [Summaries](#)
 - [Tasks](#)
-

Manage

Managing collections of items.

How-To - General

- [Configuring Maps](#)
- [Integrations](#)

About - General

- [How do Dashboards and Widgets work?](#)

Collections - General

- [Applications](#)
- [Attributes](#)
- [Connections](#)
- [Dashboards](#)
- [Integrations](#)
- [Locations](#)
- [Networks](#)
- [Orgs](#)
- [Racks](#)
- [Widgets](#)

How-To - Devices

- [Delete a Device](#)
- [Device Icons](#)
- [How to Bulk Edit device attributes](#)
- [How to import devices using a spreadsheet](#)
- [Integrations](#)

About - Devices

- [Changes](#)
- [DB Schema - component tables](#)
- [DB Schema - system table](#)
- [Information about software keys](#)
- [Matching Devices](#)
- [Overwriting Device Attributes \(or not\)](#)

Collections - Devices

- [Applications](#)
- [Attributes](#)
- [Devices](#)
- [Fields](#)
- [Integrations](#)
- [Locations](#)
- [Orgs](#)

How-To - Users

- [How to Enable LDAP Authentication and Authorization for Open-Audit](#)

About - Users

- [Users, Roles and Orgs - how does it work?](#)

Collections - Users

- [LDAP_Servers](#)
 - [Orgs](#)
 - [Roles](#)
 - [Users](#)
-

Administer

Supporting documentation about the Open-Audit application itself.

How-To

- [Apache Configuration Items](#)
- [Backup and Restore](#)
- [Configuring Open-Audit with HTTPS/SSL](#)
- [How to Enable LDAP Authentication and Authorization for Open-Audit](#)
- [Information about how to get data into Open-Audit](#)
- [MySQL hints](#)

About

- [Cross Site Request Forgery \(CSRF\) implementation](#)
- [DB Schema - component tables](#)
- [DB Schema - system table](#)
- [Errata for Open-Audit releases](#)
- [Information about default users and passwords](#)
- [Information about Network Ports](#)

Collections

- [Database](#)
- [LDAP_Servers](#)
- [Logs](#)
- [Open-Audit Configuration](#)

- [Reset, Backup and Restore the Open-Audit database](#)

Troubleshooting

- [Auditing Windows machines from Linux using SMB2](#)
- [MySQL total number of locks exceeded](#)
- [Troubleshooting](#)
- [Troubleshooting LDAP logins](#)

- [Information about Printers](#)
- [Information about software keys](#)
- [Information about the architecture of Open-Audit](#)
- [Open-Audit Release Notes](#)
- [Scalability](#)
- [Server Requirements](#)
- [Storing Credentials \(encryption\) in Open-Audit](#)
- [The Open-Audit API](#)

Additional Documentation

Additional How-To Guides

- [Baselining Devices for Consistency and Standardization](#)
- [Building your Network Discovery](#)
- [Collector server creation](#)
- [Creating, Populating, and Reporting on Custom Fields](#)
- [Creating Custom Reports](#)
- [Leveraging Locations to Speed Up Searching and Display](#)
- [Monitoring Files for Changes](#)
- [Organizing your Devices and Users](#)
- [Software Asset Management](#)

Webinars

- [Webinar - Architecting OAE as a Large Scale CMDB Solution](#)
- [Webinar - Top-10 Features You Need](#)
- [Webinar - Using Active Directory for Authentication](#)

Blog entries

Blog Posts

- Blog: [Open-Audit 4.0.0](#) created by Mark Unwin Open-Audit Oct 29, 2020
 - Blog: [Recently reported vulnerabilities within Open-Audit](#) created by Mark Unwin Open-Audit May 05, 2020
 - Blog: [Open-Audit 3.3.0](#) created by Mark Unwin Open-Audit Feb 21, 2020
 - Blog: [Apache and ModSecurity](#) created by Mark Unwin Open-Audit Jan 14, 2020
 - Blog: [Rules for Open-Audit](#) created by Mark Unwin Open-Audit Sep 02, 2019
-

Open-Audit API

- [Using Postman to query the Open-Audit API](#)
- [API Examples for Postman](#)
- [The Open-Audit API](#)

Recently Updated

[Backup and Restore](#)

Oct 08, 2021 • updated by Mark Unwin • [view change](#)

[Target Client Configuration](#)

Sep 30, 2021 • updated by Mark Unwin • [view change](#)

[Screenshot at 2021-09-28 13-38-27.png](#)

Sep 28, 2021 • attached by Mark Unwin

[Screenshot at 2021-09-28 13-38-19.png](#)

Sep 28, 2021 • attached by Mark Unwin

[Screenshot at 2021-09-28 13-25-09.png](#)

Sep 28, 2021 • attached by Mark Unwin

Search Open-Audit Wiki