

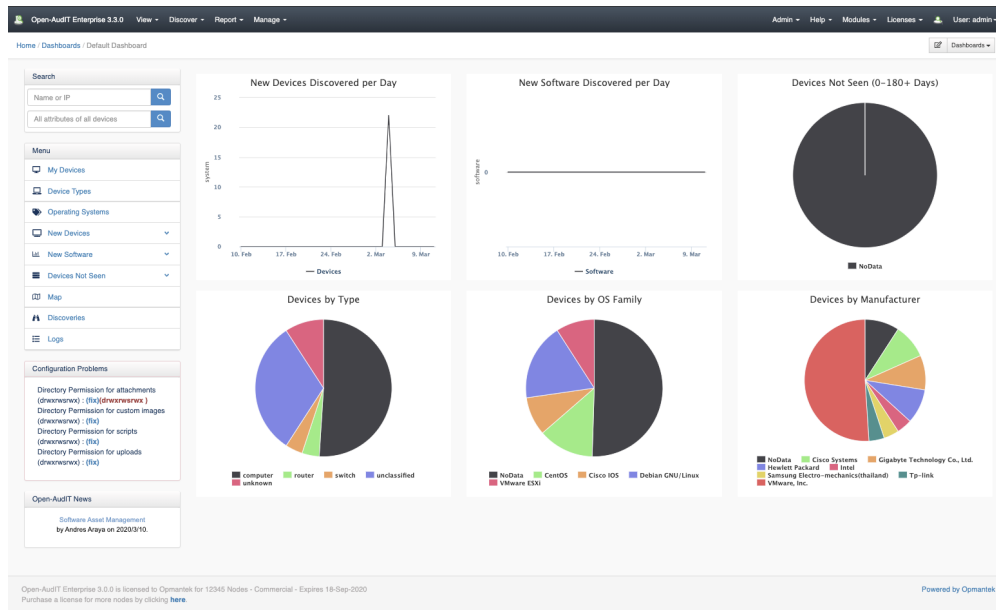
Dashboards

As at Open-Audit 2.2, we now ship with several pre-configured Dashboards. If you are a Professional user, you can select between two of these and set it as your default page when you logon. If you are an Enterprise user, you can not only select between the five preconfigured Dashboards, but you also have the ability to create your own.

The page [How do Dashboards and Widgets work?](#) may be of some assistance here.

Dashboards use [Widgets](#), of which we supply over thirty as a default set. Professional users cannot alter these, but an Enterprise user has complete customisation abilities - including creating your own.

Dashboard provide "at a glance" important visibility for changes occurring on your network as well as providing quick links to device types, manufacturers, and operating systems and so much more.



Open-Audit Enterprise 3.3.0 View Discover Report Manage Admin Help Modules Licenses User: admin

Home / Dashboards Dashboards

50 records per page Search:

Execute	Details	Name	Description	Delete
		Clouds Dashboard	The details of your cloud infrastructure	
		Default Dashboard	The Default Open-Audit Dashboard	
		Devices Dashboard	Devices Information	
		Discovery Dashboard	Discovered Devices	
		Network Dashboard	Networks and Locations	
		Purchasing Dashboard	Purchase Management	

Showing 1 to 6 of 6 entries First Previous Next Last

Database Schema

The database schema can be found in the application if the user has database::read permission by going to menu: Admin -> Database -> List Tables, then clicking on the details button for the table.

API / Web Access

You can access the collection using the normal Open-Audit JSON based API. Just like any other collection. Please see [The Open-Audit API](#) documentation for further details.

Default Items

Shipped are a set of default items. These can be found by going to menu: Help Defaults Dashboards.