

# Interface Capacity Report

## Interface Capacity Report

New in version 3.0.8. Please note that the precise content of this report is subject to change.

The interface capacity report displays a comparison between configured interface speeds and observed actual bandwidth figures.

For each selected interface, it shows the configured input and output speeds, the observed maxima of input and output bandwidth for the report period, and the 95th percentile of the interface utilisation.

Before version 3.0.14, the 95th percentile for *combined* interface utilisation was shown (Combined utilisation in this report means the set of averages of each input and output utilisation reading). From 3.0.14 onward, you can select from three options: the 95th of *combined* utilisation, two separate columns for 95th of input and output utilisation, or three separate columns for 95th of input, output and combined utilisation.

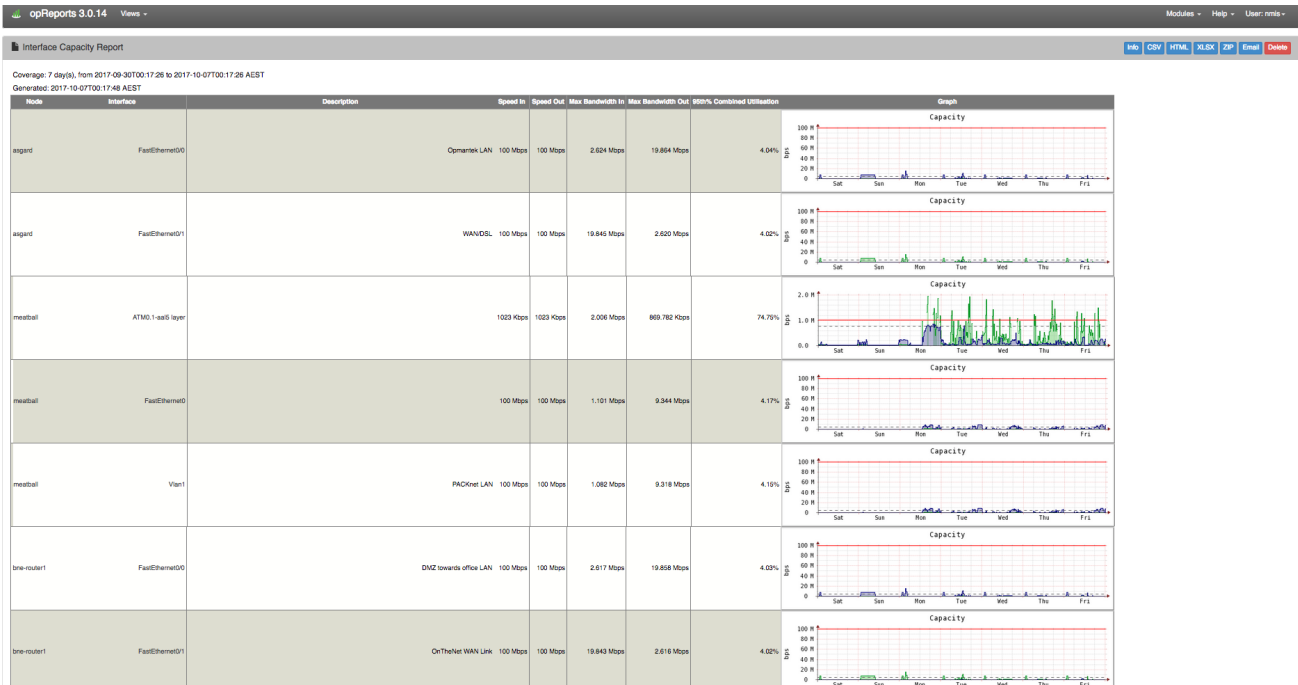
In the HTML output format all interface speed and bandwidth figures are auto-scaled and shown with the most appropriate unit, whereas CSV and XLSX outputs contain the unscaled data in bits per second.

From version 3.0.10 on this report offers optional embedded graphs of each interface's capacity. These graphs show the observed input and output bandwidth (input in green, output in blue), and the higher of the configured in and out speeds as a red warning line. If the configured input and output speeds are identical, the 95th percentile of the *combined* interface utilisation is also shown as a dotted line.

The default choice is to include graphs but you can change that using the report option `embedgraphs`. In the GUI this option is named "Include Embedded Graphs". The graph contents are not configurable, but the graph size can be adjusted using the configuration option `opreports_embedded_graph_size` (default: 600 x 150 pixels).

To view the full version of this report you can download an example ZIP file [HERE](#)

An example report screen shot is below.



As of opReports version 3.1.4 the Interface Capacity Report now has the 95th display format option. This option is set under advanced features when generating the report and can display as Percent, Bandwidth (bit/s), or both Percent and Bandwidth.

Show 95th Percentile

Combined In and Out Utilisation

95th Percentile Format

✓ Percent

Bandwidth (bits/s)

both Percent and Bandwidth

Authorised Viewers

Generate

Cancel

Advanced Options

Example report displaying both Percent and Bandwidth:

## Interface Capacity Report

[Info](#) [CSV](#) [HTML](#) [XLSX](#) [ZIP](#) [Email](#) [Delete](#)

Coverage: 7 day(s), from 2018-07-09T13:17:06 to 2018-07-16T13:17:06 AEST

Generated: 2018-07-16T13:17:11 AEST

Node	Interface	Description	Speed In	Speed Out	Max Bandwidth In	Max Bandwidth Out	95th% Combined Utilisation	95th% Combined Utilisation (Bandwidth)	Graph
asgard	FastEthernet0/1	WAN/DSL :OU812:	1100 Kbps	1100 Kbps	2.154 Mbps	1.047 Mbps	40.58%	446.418 Kbps	
one-router1	FastEthernet0/1	WAN/DSL :OU812:	1100 Kbps	1100 Kbps	2.117 Mbps	956.891 Kbps	44.87%	493.593 Kbps	
char-router1	FastEthernet0/1	WAN/DSL :OU812:	1100 Kbps	1100 Kbps	1.620 Mbps	986.168 Kbps	39.65%	436.154 Kbps	
one-router1	FastEthernet0/1	WAN/DSL :OU812:	1100 Kbps	1100 Kbps	2.117 Mbps	956.891 Kbps	44.87%	493.593 Kbps	