

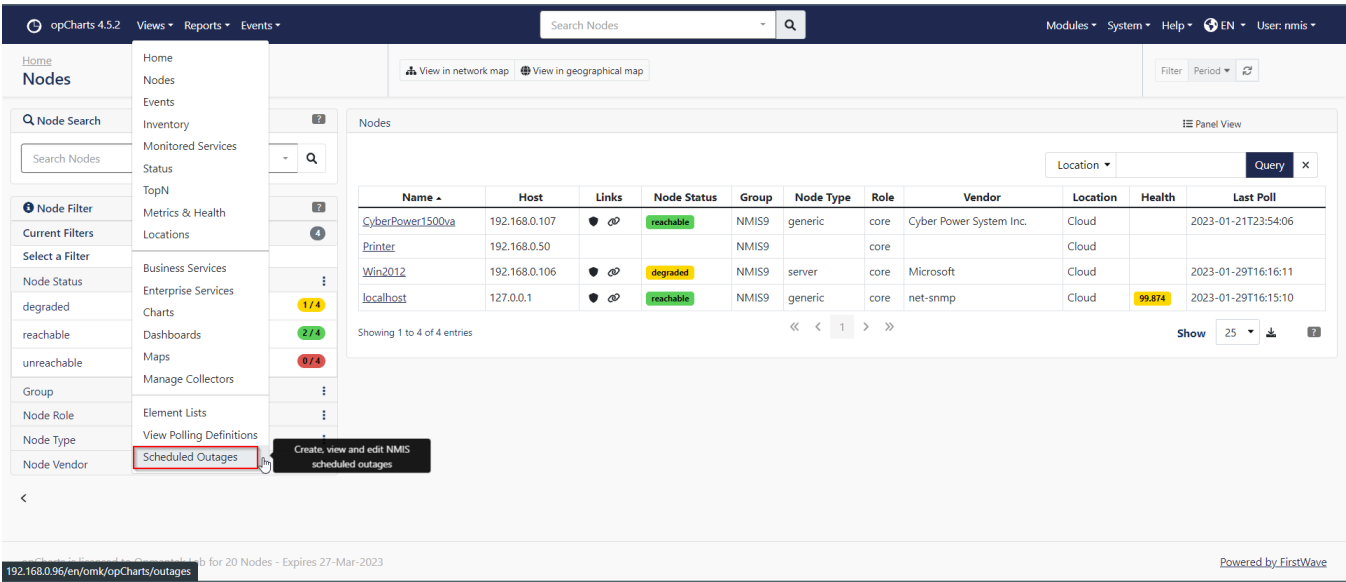
# Scheduled outages

## Scheduled outages

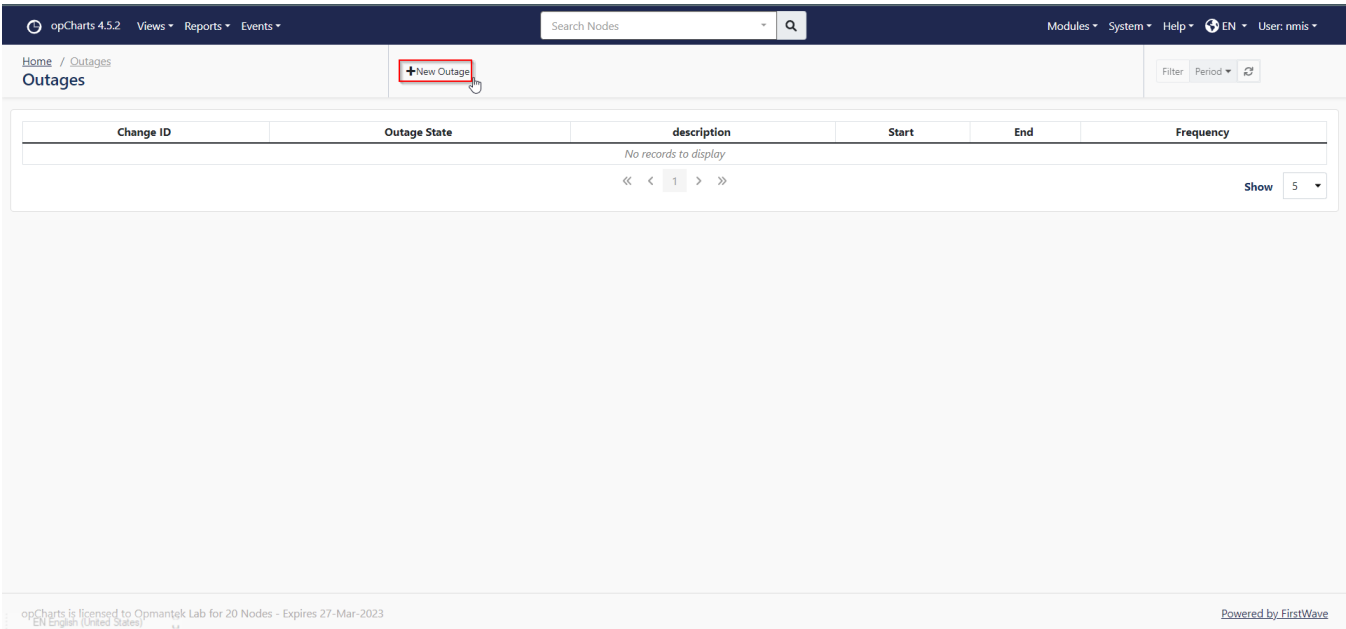
**NOTE: opCharts 3.2.4 now requires NMIS 8.6.2G**

Join Paul McClendon, an Opmantek Support Engineer, as he demonstrates how to quickly create outages in opCharts.

Now you can create outages from opCharts. To do this navigate to opCharts then from the menu select Views -> Scheduled Outages.



From here you can create a new outage or view your current scheduled outages.



After clicking on the New Outage icon the screen below is displayed. Enter in the relevant information and click save. This new outage will now be displayed under your current scheduled outages.

opCharts 4.5.2
Views
Reports
Events
Search Nodes
Modules
System
Help
EN
User: nrmis

Home / Outages / Outage Outages
Filter
Period
27

Options
Description
Windows Server
Change ID
Frequency
daily
Discard Performance Data
Warning: The default option is to collect performance data during an outage window. If you do not want to collect performance data during the outage you can change this here.
Outage Window
Start
01:00
End
5:00
Common Time Formats
Node Selection
Selectors
Selector Type
node
Property
Group
Values
= NMIS9
Delete Outage
Cancel
Save
Save and Back

opCharts 4.5.2 (License: Open Source) Lab for 20 Nodes - Expires 27-Mar-2023
Powered by FirstWave

Node Selection
Selectors
Selector Type
node
Property
Group
Values
= NMIS9
Delete Outage
Cancel
Save
Save and Back

opCharts 4.5.2 (License: Open Source) Lab for 20 Nodes - Expires 27-Mar-2023
Powered by FirstWave

Below are the fields and functions of the outage creation UI.

Field	Function
Description	Add a description of the outage
Change ID	ID that goes along with the outage
Frequency	How often the outage occurs (Once, Daily, Weekly, Monthly)
Start	When the outage starts
End	When the outage ends
Selector Type	The type of device the outage is for (Node)
Property	Any property made from the selector table can be accessed
Values	Multi select, search or paste comma separated property values