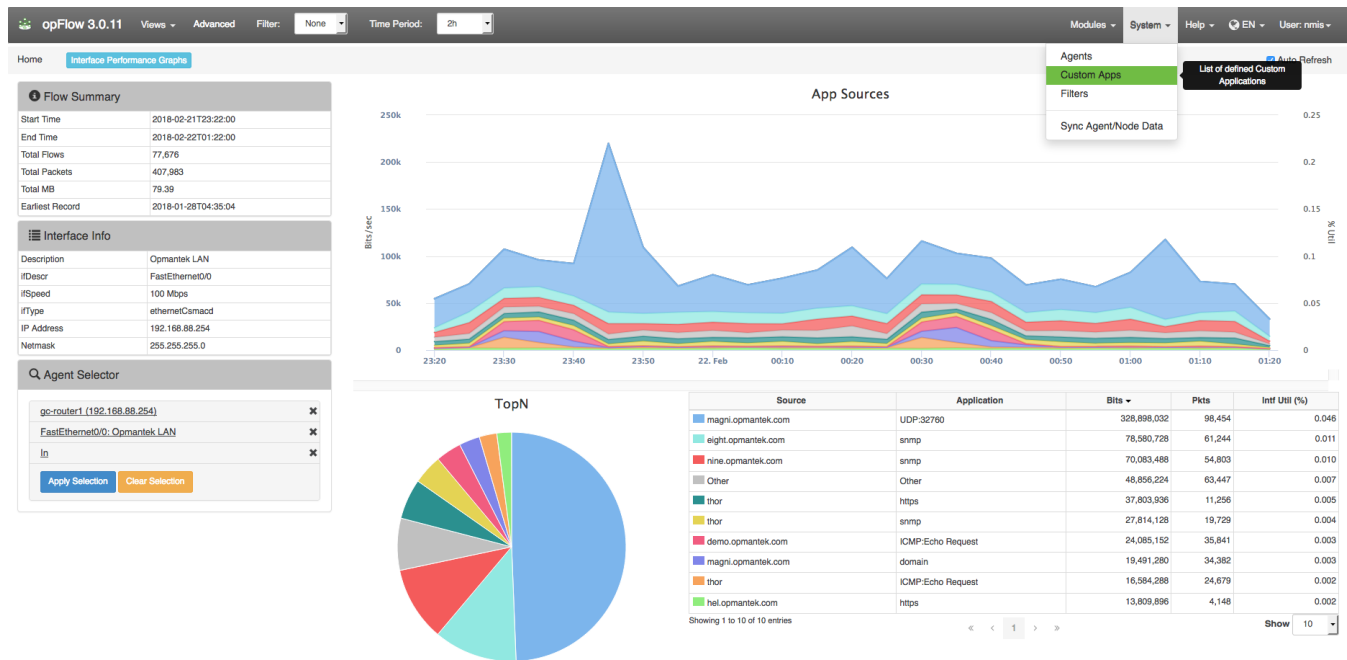


Creating Custom Applications

Custom Applications give you the ability to assign applications to specific network traffic that would normally look random. It's designed to be a way to identify traffic that would otherwise look random and give it a custom name because you know the traffic belongs to a specific application. For example, UDP port 12345 is net flow traffic from a known virtual desktop. So we could create a custom application called "Virtual Desktop net flow data" with the same settings then all of the data in the GUI for UDP port 12345 will now be labeled as "Virtual Desktop net flow data" instead of "UDP port 12345".

NOTE: Newly created apps only take effect on new flow records. Existing flow records will still hold on to the old application name.

To create a new Custom Application, Navigate to menu -> System -> Custom Apps



From this page click the blue "+" to open the New Custom App menu.

The screenshot shows the opFlow 3.0.11 interface. The top navigation bar includes 'Modules', 'System', 'Help', 'EN', and 'User: nmis'. A dropdown menu is open under 'System', showing options: 'Agents', 'Custom Apps', 'Filters', and 'Sync Agent/Node Data'. The 'Custom Apps' option is highlighted. The main content area displays a table with columns: Name, Description, Port, and Protocol. A blue '+' button is visible in the bottom left corner of the table.

Name	Description	Port	Protocol
Consolidated	Placeholder for records that were consolidated	65536	Consolidated
UDP	SSH logins	22	UDP

In the Custom App menu enter a Name, Description, the desired Port number, and corresponding Protocol. After that information is entered, click the blue add button in the bottom left of the menu and your new Custom App is successfully created.

New Custom App



Name

Description

Port

0



Protocol

Cancel

Add