

# opEvents Views Overview

- opEvents Views
- Dashboard View
  - Time Filter
  - Node Context
  - Event Context
- Events View
- Current Events View
- Actions View
- Raw Logs View
- Archive Logs View
- Nodes View
- Summary Reports View
  - Creating Custom Summary Reports
  - Summary Reports

## opEvents Views

This is an introduction to all the Views in opEvents.

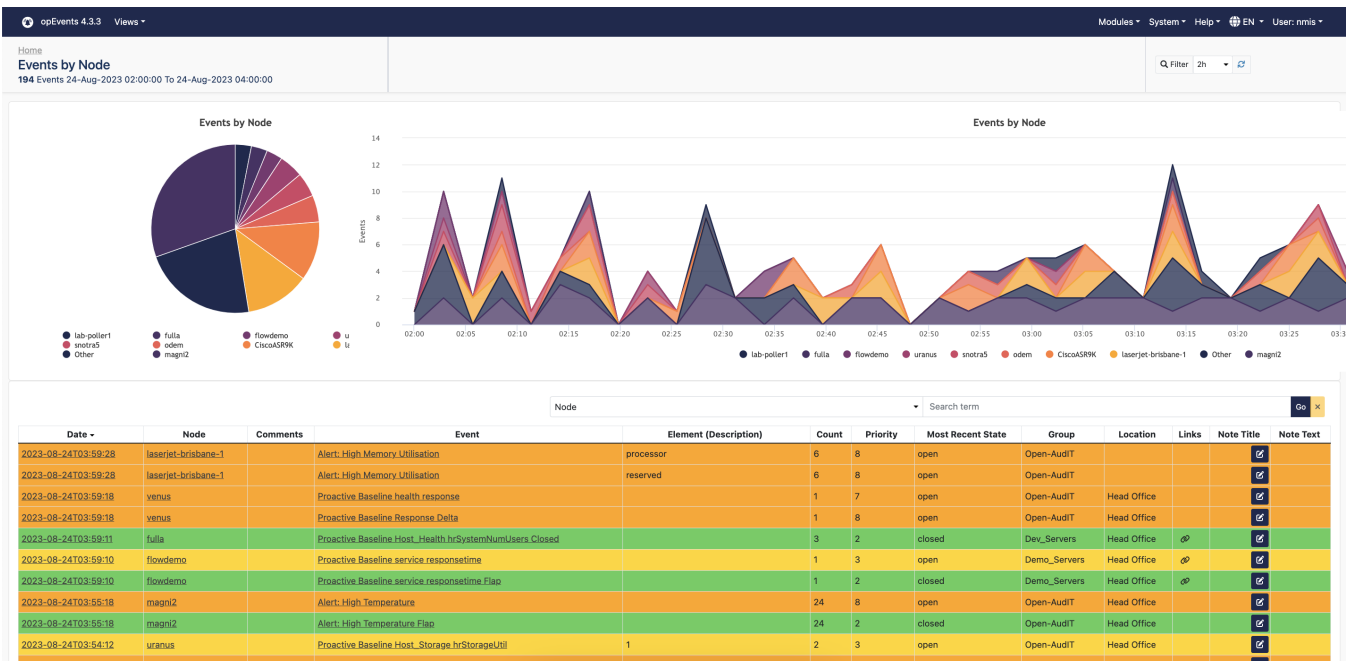
## Dashboard View

The Dashboard View gives you a snapshot of the nodes with the most events in your environment in simple, easy-to-grasp graphical and tabular formats. It displays the Events by Node charts, filtered according to the specified Time Filter and the most recent events in a table. The Dashboard View is the default Home page for opEvents.

- Use the time **Filter** function located at the top right corner of the chart to specify the particular time period you want to look for the events in.
- Hover over a segment of the pie chart to see the device name.
- Click on a segment for a comprehensive look at the events on the specific device, occurred during the indicated time period.
- If you don't want to display a specific device on the chart/graph, you can filter it out by clicking on its name in the legend below the chart/graph.

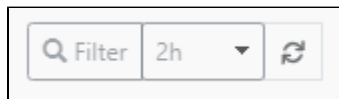
In the table below the charts, you can see the list of the most recent events, with the time of the event, the node, the event name, description of the event, the number of times the event occurred, the priority, and the most recent state of the node.

- Click on a column name/heading to sort the events list by ascending or descending order and find the required events more easily.
- Use the **Search** field above the table to find a specific event quickly. You can also narrow the search by selecting a column name from the drop-down list beside the Search field.



## Time Filter

The top right-hand corner of the Event views page has a **Filter** widget with three buttons:



1. **Filter** for Advanced Filters - **Time Filters**, **Event Filter**, and **Summarisation**
2. **Period** for quick Time Period filtering, with a drop-down of time periods
3. **Toggle** to Toggle Auto Refresh

## Node Context

To view more comprehensive information about a device, click on a node link under the Node column (from any of the Views pages). This will open the Node Context page of the device.

**Node Summary for BNEDCRT01**

BusinessService	
Customer	FirstWave
Group	Brisbane Corporate Network
Host	10.161.0.20
Location	Brisbane DC
Name	BNEDCRT01
Notes	

**Recent events for BNEDCRT01 ( last 2h )**

Date	Event	Element (Description)
2023-08-24T03:59:28	Alert: High Memory Utilisation	processor
2023-08-24T03:59:28	Alert: High Memory Utilisation	reserved
2023-08-24T03:49:47	Alert: High Memory Utilisation Closed	reserved
2023-08-24T03:49:47	Alert: High Memory Utilisation Closed	processor
2023-08-24T03:40:16	Alert: High Memory Utilisation	processor
2023-08-24T03:40:16	Alert: High Memory Utilisation	reserved
2023-08-24T03:30:24	Alert: High Memory Utilisation Closed	reserved
2023-08-24T03:30:24	Alert: High Memory Utilisation Closed	processor
2023-08-24T03:25:36	Alert: High Memory Utilisation	reserved
2023-08-24T03:25:36	Alert: High Memory Utilisation	processor

Showing 1 to 10 of 22 entries

**Elements Up**

Element (Description)	State Type	Last Change	Event Up	Event Down	Edit State
BNEDCRT01	Proactive Reachability	2.0d			
BNEDCRT01	SNMP	2.1d			
BNEDCRT01	Node	2.1d			
GigabitEthernet1/0/20	Interface	2.2d			
BNEDCRT01	Proactive Baseline Response Delta	11.7d			

**Elements Down**

Element (Description)	State Type	Last Change	Event Up	Event Down	Edit State
processor	Alert: High Memory Utilisation	7.7m			
reserved	Alert: High Memory Utilisation	7.7m			
BNEDCRT01	Very Sick Node	2.1d			
GigabitEthernet1/0/3	Proactive Interface Error Input Packets	2.1d			
GigabitEthernet1/0/3	Proactive Interface Error Output Packets	2.1d			
GigabitEthernet1/0/7	Proactive Interface Error Input Packets	2.1d			
GigabitEthernet1/0/7	Proactive Interface Error Output Packets	2.1d			
TenGigE0/1/1/1	Proactive Interface Error Input Packets	2.1d			
TenGigE0/1/1/1	Proactive Interface Error Output Packets	2.1d			
GigabitEthernet1/0/13	Proactive Interface Error Input Packets	2.1d			

On the Node Context page, you can view a snapshot of the device properties, elements up and down, status, and the most recent events on the device.

- Click the **Details** menu item to view the complete raw details for the node.
- Click **View Node in NMIS** to open the Node Details page in NMIS.
- Click the **Edit Node** menu item to update the Node settings, including the node Name, Host, Location, etc.
  - You can enable or disable the node activation and licensing here as well as add Comments for the node.
  - You can also Delete the node on the Edit Node page.
- Click **Node Tools** to access tools like Ping, Trace, nslookup, etc. You can also open the Edit Node Configuration page from here.
- Click the Event Up or Event Down icon to open the [Event Context](#) page for that event.
- You can toggle the State Up and Down, or delete the state using the Edit State icons.
- In the Recent Events table, click the required link in the Event column to open its [Event Context](#) page.

- Click the **Overview**  icon to open the Node Events Overview page that displays all of the node events on a single page.

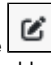


- Similar to the Dashboard page, on this page too you can filter the events by time period, select/deselect the events displayed on the charts, search for Events, and probe further into each Event by clicking the Event link in the table.

## Event Context

To learn more about an event or view more granular details about it, click on an event link under the Event column (from any of the Views pages). This will open the Event Context page for the event.

On the Event Context page, you can view a summary of the Event, the node it was generated on, Element, Priority, and the applicable Escalation policy (if configured).

- Click the **Acknowledge** menu item to acknowledge the event.
- You can add a comment to the Event listing using the **Add Comments** button in the menu.
- Click the **View Node in NMIS** button to open the Node Details page in NMIS.
- To view all the events reported in the same time period, click the **More Events** menu item. This will open the [Events View](#) page.
- You can add a custom **Note Title** and **Note Text** to the event for future reference, easy classification or filtering from the [Events](#) page or the [Dash board](#) page.
- Click the **Edit Node**  icon in the Node section if you want to update the Node settings, including the node Name, Host, Location, etc.
  - You can enable or disable the node activation and licensing on the Edit Node page, as well as add Comments for the node.
  - You can also Delete the node on this page.
- Under the Recent Events list, you can search for an Event or an Element (Description).
  - Click on a link in the Event column to open its Event Context page.
  - Click the **Overview** button to open the [Node Events Overview](#) page that displays all the events generated on the specific node.
- You can view the configured policy actions taken on each event under the Actions Taken for Event table.

# Events View

From the top menu, choose **Views > Events** for a more detailed view of the table on the Dashboard page.

opEvents 4.3.3 Views

Home / Event List  
Events  
10 Events 24-Aug-2023 04:45:00 To 24-Aug-2023 05:00:00

Q Filter 15m

Date	Node	Comments	Event	Element (Description)	Count	Priority	Most Recent State	Group	Location	Links	Note Title	Note Text
2023-08-24T04:57:34	magn2		Alert: High Temperature		8	open	Open-Audit	Head Office				
2023-08-24T04:57:34	magn2		Alert: High Temperature Flap		2	closed	Open-Audit	Head Office				
2023-08-24T04:54:12	uranus		Proactive Baseline tcp tcpCurrEstab		1	3	open	Open-Audit	Head Office			
2023-08-24T04:54:09	fulla		Proactive Baseline Host_Health hrSystemNumUsers	Closed	1	2	closed	Dev_Servers	Head Office			
2023-08-24T04:52:39	magn2		Alert: High Temperature		1	8	open	Open-Audit	Head Office			
2023-08-24T04:52:39	magn2		Alert: High Temperature Flap		1	2	closed	Open-Audit	Head Office			
2023-08-24T04:51:05	CiscoAS9K		Proactive CPU	Q/RSPQ-Virtual processor for RP XR	1	5	open	Remote Site	Cloud			
2023-08-24T04:51:05	CiscoAS9K		Proactive CPU Flap	Q/RSPQ-Virtual processor for RP XR	1	2	closed	Remote Site	Cloud			
2023-08-24T04:47:51	magn2		Alert: High Temperature		1	8	open	Open-Audit	Head Office			
2023-08-24T04:47:51	magn2		Alert: High Temperature Flap		1	2	closed	Open-Audit	Head Office			

Showing 1 to 10 of 10 entries

« < > »

Show 25

- Above the table in the top left, you can see the total number of events being reported and the time period of the report.
- Apart from other information about the event, its name and the device it occurred on, you can also view the Element Description, event Priority and its Most Recent State.
- Click a link under the Date, Node, or Event columns for a more detailed view of them.



- You can add a Note Title to an event by clicking the edit icon in its row and adding it in the text field. After adding the Note Title, click the update icon.
- Click on a column heading to sort the events list by ascending or descending order and find the required events more easily.
- Use the **Query** field above the table to find a specific event quickly. You can also narrow the search by selecting a column name from the drop-down list beside the **Query** field.



- To generate a copy of this page in CSV format and download it, use the Export to CSV icon below the table.
- Specify the number of events you want to display in the table using the **Show** drop-down menu.

# Current Events View

On the **Views > Current Events**, you can Acknowledge events that have recently occurred and may not have been noticed or acted upon yet.

opEvents 4.3.3 Views

Home / Event List  
Events  
23 Events 24-Aug-2023 01:00:00 To 24-Aug-2023 05:00:00

Q Filter 4h

Current Events connected

Acknowledge Select Filter Save Filter

Node

Query

	Date	Node	Event	Priority	Element (Description)	State	Escalation	Note Title	Note Text
<input type="checkbox"/>	2023-08-24T01:34:07	demo	Proactive Baseline Host_Health hrSystemNumUsers	8		open			
<input type="checkbox"/>	2023-08-24T03:29:13	omk-vm8-centos7	Proactive Baseline tcp tcpCurrEstab	8		open			
<input type="checkbox"/>	2023-08-24T04:14:06	woolio	Proactive Baseline tcp tcpCurrEstab	8		open			
<input type="checkbox"/>	2023-08-24T04:28:10	laserjet-brisbane-1	Alert: High Memory Utilisation	8	processor	open			
<input type="checkbox"/>	2023-08-24T04:28:10	laserjet-brisbane-1	Alert: High Memory Utilisation	8	reserved	open			
<input type="checkbox"/>	2023-08-24T01:44:12	andra5	Proactive Baseline Host_Storage hrStorageUtil	7	3	open			
<input type="checkbox"/>	2023-08-24T03:49:12	uranus	Proactive Baseline Host_Storage hrStorageUtil	7	3	open			
<input type="checkbox"/>	2023-08-24T04:19:11	odem	Proactive Baseline Host_Storage hrStorageUtil	6	1	open			
<input type="checkbox"/>	2023-08-24T04:09:08	demo	Proactive Baseline tcp tcpCurrEstab	5		open			
<input type="checkbox"/>	2023-08-24T04:19:10	lagomar	Proactive Baseline tcp tcpCurrEstab	5		open			
<input type="checkbox"/>	2023-08-24T01:02:06	Switch-1	Node Configuration Change Detected	3	nmap -T4 -F				
<input type="checkbox"/>	2023-08-24T01:03:17	demo	Alert: High TCP Connection Count	3	tcpCurrEstab	open			

- Select the events you want to acknowledge (by clicking the check boxes in the first column) and click the **Acknowledge** button above the table.
- You can also acknowledge all the events on the page in one go, by clicking the **Select All** check box and then clicking the **Acknowledge** button.



- You can add a Note Title to an event by clicking the edit icon in its row and adding it in the text filed. After adding the Note Title, click the update icon.
- You can specify the number of events to display in the table using the **Show** drop-down menu.
- Click a link under the Date, Node, or Event columns for further information about the device/event.

# Actions View

The **Views > Actions** page displays the actions taken on the events. Event actions are the conditions an event must conform to and what actions to take in case of a match.

opEvents 4.3.3Views

Home / Actions  
Actions  
162 Actions 24-Aug-2023 04:05:00 To 24-Aug-2023 05:05:00

ENUser: nms


Filter 1h

Date	Event	Node	Action	Details	Comment
2023-08-24T04:59:17	Proactive Baseline tcp_currEstab Closed	uranus	autoacknowledge		automatically acknowledged due to state change
2023-08-24T04:59:17	Proactive Baseline tcp_currEstab Closed	uranus	autoacknowledge		automatically acknowledged due to state change
2023-08-24T04:57:36	Alert: High Temperature Flap	magpi2	tag	modelsAutomatic	set to TRUE
2023-08-24T04:57:36	Alert: High Temperature Flap	magpi2	tag	outageCurrent	set to FALSE
2023-08-24T04:57:36	Alert: High Temperature Flap	magpi2	flap		event flap detected, action not required
2023-08-24T04:55:42	Proactive Baseline tcp_currEstab	uranus	tag	outageCurrent	set to FALSE
2023-08-24T04:55:42	Proactive Baseline tcp_currEstab	uranus	tag	modelsAutomatic	set to TRUE
2023-08-24T04:54:13	Proactive Baseline Host_Health hrSystemNumUsers Closed	fulla	autoacknowledge		automatically acknowledged due to state change
2023-08-24T04:54:13	Proactive Baseline Host_Health hrSystemNumUsers Closed	fulla	autoacknowledge		automatically acknowledged due to state change
2023-08-24T04:52:44	Alert: High Temperature Flap	magpi2	tag	modelsAutomatic	set to TRUE
2023-08-24T04:52:44	Alert: High Temperature Flap	magpi2	tag	outageCurrent	set to FALSE
2023-08-24T04:52:44	Alert: High Temperature Flap	magpi2	flap		event flap detected, action not required
2023-08-24T04:51:09	Proactive CPU Flap	CiscoASR9K	flap		event flap detected, action not required
2023-08-24T04:51:09	Proactive CPU Flap	CiscoASR9K	tag	outageCurrent	set to FALSE
2023-08-24T04:51:09	Proactive CPU Flap	CiscoASR9K	tag	modelsAutomatic	set to TRUE
2023-08-24T04:47:57	Alert: High Temperature Flap	magpi2	flap		event flap detected, action not required
2023-08-24T04:47:57	Alert: High Temperature Flap	magpi2	tag	modelsAutomatic	set to TRUE
2023-08-24T04:47:57	Alert: High Temperature Flap	magpi2	tag	outageCurrent	set to FALSE
2023-08-24T04:44:18	Alert: Critical Swap Usage Closed	apollo	autoacknowledge		automatically acknowledged due to state change
2023-08-24T04:44:18	Alert: Critical Swap Usage Closed	apollo	autoacknowledge		automatically acknowledged due to state change
2023-08-24T04:43:08	Alert: High Temperature Flap	magpi2	tag	outageCurrent	set to FALSE
2023-08-24T04:43:08	Alert: High Temperature Flap	magpi2	tag	modelsAutomatic	set to TRUE
2023-08-24T04:43:08	Alert: High Temperature Flap	magpi2	flap		event flap detected, action not required
2023-08-24T04:41:35	Proactive CPU Closed	CiscoASR9K	autoacknowledge		automatically acknowledged due to state change
2023-08-24T04:41:35	Proactive CPU Closed	CiscoASR9K	autoacknowledge		automatically acknowledged due to state change

Showing 1 to 25 of 162 entries

<< < 1 2 3 4 5 6 7 > >>

Show25

- In the Actions table, you can view the Event name, its Date, the Node on which the event has occurred, the Action taken, and the Comments added about the specific action.
- You can sort the entries in the table by clicking the required column headers.
- Click an Event link or a Node link (in their respective columns) for further details about them.
- Generate a copy of this page in CSV format and download it using the Export to CSV  icon below the table.
- Specify the number of events to display in the table using the **Show** drop-down menu.
- You can customize the information displayed on this page, including the columns of the table, by editing the `opEvents_action-log.json` file at `/usr/local/omk/conf/table_schemas` (on the server filesystem). For more information on how to edit these values, see [opEvents 2.4.x - Customizing Table Columns](#).

You can find more details about which Actions can be managed at [Event Actions and Escalation](#).

# Raw Logs View

On the **Views > Raw Logs** page, you can view the current raw event logs. This view is useful for viewing what the full event message says within the Entry column.

opEvents 4.3.3Views

Home / Raw Logs

Raw Logs

526 Logs 24-Aug-2023 04:10:00 To 24-Aug-2023 05:10:00

Q FilterTh

2

Date	Type	Event ID	Entry
2023-08-24T04:42:56	nmis_eventlog	64e3fed6fe01ceb7655e772d	1692852176,BNEDCRTR01,Proactive Interface Output Utilisation,Normal,GigabitEthernet1/10/18,GUI: deleted event: Proactive Interface Output Utilisation
2023-08-24T04:42:56	nmis_eventlog	64e3fed6fe01ceb7655e772e	1692852176,BNEDCRTR01,Proactive Interface Input Utilisation,Normal,GigabitEthernet1/10/3,GUI: deleted event: Proactive Interface Input Utilisation
2023-08-24T04:42:56	nmis_eventlog	64e3fed6fe01ceb7655e772f	1692852176,BNEDCRTR01,Proactive Interface Output Utilisation,Normal,GigabitEthernet1/10/3,GUI: deleted event: Proactive Interface Output Utilisation
2023-08-24T04:42:56	nmis_eventlog	64e3fed6fe01ceb7655e7730	1692852176,BNEDCRTR01,Proactive Interface Output Utilisation,Normal,GigabitEthernet1/10/7,GUI: deleted event: Proactive Interface Output Utilisation
2023-08-24T04:42:56	nmis_eventlog	64e3fed6fe01ceb7655e7731	1692852176,BNEDCRTR01,Proactive Interface Output Utilisation,Normal,TenGigE0/1/1,GUI: deleted event: Proactive Interface Output Utilisation
2023-08-24T04:42:56	nmis_eventlog	64e3fed6fe01ceb7655e7732	1692852176,BNEDCRTR01,Proactive Interface Output Utilisation,Normal,TenGigE0/2/0/1,GUI: deleted event: Proactive Interface Output Utilisation
2023-08-24T04:42:56	nmis_eventlog	64e3fed6fe01ceb7655e7733	1692852176,BNEDCRTR01,Proactive Interface Output Utilisation,Normal,GigabitEthernet1/10/5,GUI: deleted event: Proactive Interface Output Utilisation
2023-08-24T04:42:56	nmis_eventlog	64e3fed6fe01ceb7655e7734	1692852176,BNEDCRTR01,Proactive Interface Output Utilisation,Normal,TenGigE0/1/1/2,GUI: deleted event: Proactive Interface Output Utilisation
2023-08-24T04:42:56	nmis_eventlog	64e3fed6fe01ceb7655e7735	1692852176,BNEDCRTR01,Proactive Interface Output Utilisation,Normal,GigabitEthernet1/10/12,GUI: deleted event: Proactive Interface Output Utilisation
2023-08-24T04:42:56	nmis_eventlog	64e3fed6fe01ceb7655e7736	1692852176,BNEDCRTR01,Proactive Interface Output Utilisation,Normal,TenGigE0/1/3,GUI: deleted event: Proactive Interface Output Utilisation
2023-08-24T04:42:56	nmis_eventlog	64e3fff2fe01ceb7655e7746	1692852176,BNEDCRTR01,Proactive CPU,Normal,module 1/RSPO/CPU0,GUI: deleted event: Proactive CPU
2023-08-24T04:42:56	nmis_eventlog	64e3fff2fe01ceb7655e7747	1692852176,BNEDCRTR01,Proactive CPU,Normal,module 1/1/CPU0,GUI: deleted event: Proactive CPU
2023-08-24T04:42:56	nmis_eventlog	64e3fff2fe01ceb7655e7748	1692852176,BNEDCRTR01,Proactive CPU,Normal,module 0/RSPO/CPU0,GUI: deleted event: Proactive CPU
2023-08-24T04:42:56	nmis_eventlog	deduplicated and discarded	1692852176,BNEDCRTR01,Proactive CPU,Normal,GUI: deleted event: Proactive CPU
2023-08-24T04:42:56	nmis_eventlog	64e3fff2fe01ceb7655e774a	1692852176,BNEDCRTR01,Proactive CPU,Normal,module 0/2/CPU0,GUI: deleted event: Proactive CPU
2023-08-24T04:42:56	nmis_eventlog	64e4022ffe01ceb7655e7778	1692852176,BNEDCRTR01,Proactive Interface Error Input Packets,Normal,TenGigE0/2/0/0,GUI: deleted event: Proactive Interface Error Input Packets
2023-08-24T04:42:56	nmis_eventlog	64e4022ffe01ceb7655e7779	1692852176,BNEDCRTR01,Proactive Interface Error Output Packets,Normal,TenGigE0/2/0/0,GUI: deleted event: Proactive Interface Error Output Packets
2023-08-24T04:42:56	nmis_eventlog	64e4022ffe01ceb7655e777a	1692852176,BNEDCRTR01,Proactive Interface Error Input Packets,Normal,TenGigE0/1/10,GUI: deleted event: Proactive Interface Error Input Packets
2023-08-24T04:42:56	nmis_eventlog	64e4022ffe01ceb7655e777b	1692852176,BNEDCRTR01,Proactive Interface Error Output Packets,Normal,TenGigE0/1/10,GUI: deleted event: Proactive Interface Error Output Packets
2023-08-24T04:42:56	nmis_eventlog	64e4022ffe01ceb7655e777c	1692852176,BNEDCRTR01,Proactive Interface Error Input Packets,Normal,GigabitEthernet1/10/1,GUI: deleted event: Proactive Interface Error Input Packets
2023-08-24T04:42:56	nmis_eventlog	64e4022ffe01ceb7655e777d	1692852176,BNEDCRTR01,Proactive Interface Error Output Packets,Normal,GigabitEthernet1/10/1,GUI: deleted event: Proactive Interface Error Output Packets
2023-08-24T04:42:56	nmis_eventlog	64e4022ffe01ceb7655e777e	1692852176,BNEDCRTR01,Proactive Interface Error Input Packets,Normal,GigabitEthernet1/10/1,GUI: deleted event: Proactive Interface Error Input Packets
2023-08-24T04:42:56	nmis_eventlog	64e4022ffe01ceb7655e777f	1692852176,BNEDCRTR01,Proactive Interface Error Output Packets,Normal,GigabitEthernet1/10/1,GUI: deleted event: Proactive Interface Error Output Packets
2023-08-24T04:42:56	nmis_eventlog	64e4022ffe01ceb7655e7780	1692852176,BNEDCRTR01,Proactive Interface Error Input Packets,Normal,TenGigE1/1/1/2,GUI: deleted event: Proactive Interface Error Input Packets
2023-08-24T04:42:56	nmis_eventlog	64e4022ffe01ceb7655e7781	1692852176,BNEDCRTR01,Proactive Interface Error Output Packets,Normal,TenGigE1/1/1/2,GUI: deleted event: Proactive Interface Error Output Packets

Showing 301 to 325 of 526 entries

<< < 11 12 13 14 15 16 17 18 19 20 > >>

Show25

- Click on an Event ID link to open the Event Context page and view the complete details about the event.
- Click on a log Date link to open the Raw Log Details page and view more details about the selected log.

opEvents 4.3.3Views

Home / Raw Logs

Raw Log Details

Q FilterTh

2

Raw Log Details

Search:

16

Key	Value
_id	64e4022ffe01ceb7655e777a
date	2023-08-24T04:42:56
entry	1692852176,BNEDCRTR01,Proactive Interface Error Input Packets,Normal,TenGigE0/2/0/0,GUI: deleted event: Proactive Interface Error Input Packets
eventid	64e4022ffe01ceb7655e7778
time	1692852176
time_processed	1692852176.72145
type	nmis_eventlog



- To generate a copy of this page in CSV format and download it, use the Export to CSV icon below the table.
- Specify the number of raw logs to display in the table using the **Show** drop-down menu.
- For a new Type of log to be displayed in the Raw Logs table, add an entry in the `opevents_logs` section in `opCommon.json`, as well as in `EventParserRules.json`. You can find more information on this at [opEvents input sources](#).
- Use the time [Filter](#) function at the top right corner of the page to locate the required events more quickly.
- You can customize the information displayed on the Raw Logs page, including the columns of the table, by editing the `opEvents_raw-log.json` file at `/usr/local/omk/conf/table_schemas`. Learn more about editing these values at [opEvents 2.4.x - Customising Table Columns](#).

For more information on opEvents and its logging system, see [opEvents - Centralized Logging Solution](#).

## Archive Logs View

From the top menu bar, click **Views > Archive Logs** to view all types of archived logs along with their Entry description.

opEvents 4.3.3Views

Home / Archive Logs

Archive Logs

4 Logs 24-Aug-2023 03:10:00 To 24-Aug-2023 05:10:00

Q FilterTh

2

Date	Type	Archive	Entry
2023-08-24T05:06:24	nmis_eventlog	NodeEvents	1692853582,laserjet-brisbane-1,Node Up,Normal,Ping ok: fping reported 0% loss Time=00:01:07
2023-08-24T05:06:16	nmis_eventlog	NodeEvents	1692853515,laserjet-brisbane-1,Node Down,Major,Ping failed: fping reported 100% ping loss
2023-08-24T04:36:25	nmis_eventlog	NodeEvents	1692851784,laserjet-brisbane-1,Node Up,Normal,Ping ok: fping reported 0% loss Time=00:01:06
2023-08-24T04:36:21	nmis_eventlog	NodeEvents	1692851718,laserjet-brisbane-1,Node Down,Major,Ping failed: fping reported 100% ping loss

Showing 1 to 4 of 4 entries

<< < 1 > >>

Show25

- Use the **Filter** function on the top right corner of the page to choose the number of days you want to look back for the logs depending on your log rotation setup.



- Generate a copy of this page in CSV format and download it using the Export to CSV icon below the table.
- Specify the number of logs to display in the table using the **Show** drop-down menu.
- Clicking the archive name under the Archive column will open the Archive Log Details page. It displays the event ID along with other details from the Archive Logs view pertaining to the event.
- To customize the columns in the Archive Logs table and other information displayed on this page, edit the `opEvents_archive-log.json` file at `/usr/local/omk/conf/table_schemas`. For more detail on how to edit these values, see [opEvents 2.4.x - Customising Table Columns](#).

# Nodes View

To view a list of all the Nodes in your environment and a summary of their properties (including their Group, Location, Customer, Business Services, and their Host), from the top menu bar, click **Views > Nodes**.

opEvents 4.3.3 Views

Home / NodesNodes


Q Filter 15m 27

Name	Group	Location	Customer	Business Service	Host
GC_ASR_01	GC Corporate Office	Gold Coast	FirstWave	Corporate	10.100.0.1
GC_RTR_01	GC Corporate Office	Gold Coast	FirstWave	Corporate	10.100.0.2
GC_SWL_01	GC Corporate Office	Gold Coast	FirstWave	Corporate	10.100.0.253
GC_SWL_02	GC Corporate Office	Gold Coast	FirstWave	Corporate	10.100.1.253
GC_DEV_SWL_01	Gold Coast Dev	Gold Coast	FirstWave Dev	Development	10.123.0.25

Showing 6 to 10 of 71 entries

« < 1 2 3 4 5 6 7 8 9 10 > »

Show 5

- The Nodes View allows you to quickly search for a specific node and view its events using the search box above the Nodes table.
- You can generate a copy of this page in CSV format by clicking the Export to CSV  icon below the table.
- Specify the number of devices to display in the table using the **Show** drop-down menu.
- Click on a node **Name** to open the device's Node Context page, where you can view more detailed information about the device.
- You can customize the information displayed on this page, including the columns of the table, by editing the `opEvents_node-log.json` file at `/usr/local/omk/conf/table_schemas` (on the server filesystem). For more information on how to edit these settings, see [opEvents 2.4.x - Customising Table Columns](#).

# Summary Reports View

For a summary list about all of the reports generated, from the top menu bar, choose **Views > Summary Reports**.

opEvents 4.3.3 Views

Home / Summary ReportsSummary Reports

Q Filter 15m 27

New Report

Title	XLSX	Start	End
Daily Summary Report	Download	2023-08-23T00:00:00	2023-08-24T00:00:00
Daily Summary Report	Download	2023-08-22T00:00:00	2023-08-23T00:00:00
Daily Summary Report	Download	2023-08-21T00:00:00	2023-08-22T00:00:00
Daily Summary Report	Download	2023-08-20T00:00:00	2023-08-21T00:00:00
Daily Summary Report	Download	2023-08-19T00:00:00	2023-08-20T00:00:00
Daily Summary Report	Download	2023-08-18T00:00:00	2023-08-19T00:00:00
Daily Summary Report	Download	2023-08-17T00:00:00	2023-08-18T00:00:00
Daily Summary Report	Download	2023-08-16T00:00:00	2023-08-17T00:00:00
Daily Summary Report	Download	2023-08-15T00:00:00	2023-08-16T00:00:00
Daily Summary Report	Download	2023-08-14T00:00:00	2023-08-15T00:00:00

Showing 1 to 10 of 184 entries

« < 1 2 3 4 5 6 7 8 9 10 > »

Show 10

- Click on a Report Title to open and view the [full report](#) in a new tab/window.
- You can download a report by clicking the **Download** link in the XLSX column.
- Specify the number of reports to display in the table using the **Show** drop-down menu.
- The items on this table and the information displayed on this page can be customized by going to `/usr/local/omk/conf/table_schemas` (on the server filesystem) and editing the `opEvents_summary-reports.json` file. For more information on this process, see [opEvents 2.4.x - Customising Table Columns](#).

# Creating Custom Summary Reports

You can generate a new custom report for a specific time period as described below:

- Click the **New Report** button above the reports table. The Create Report window appears.

Create Report

Report Title

New Report

Report Period

Start Date

End Date

Generate Report

Cancel

- Enter a **Report Title** (optional) and specify the start and end dates for the **Report Period**.

3. Click the **Generate Report** button.

You can see the generated full report page for the specified time period.

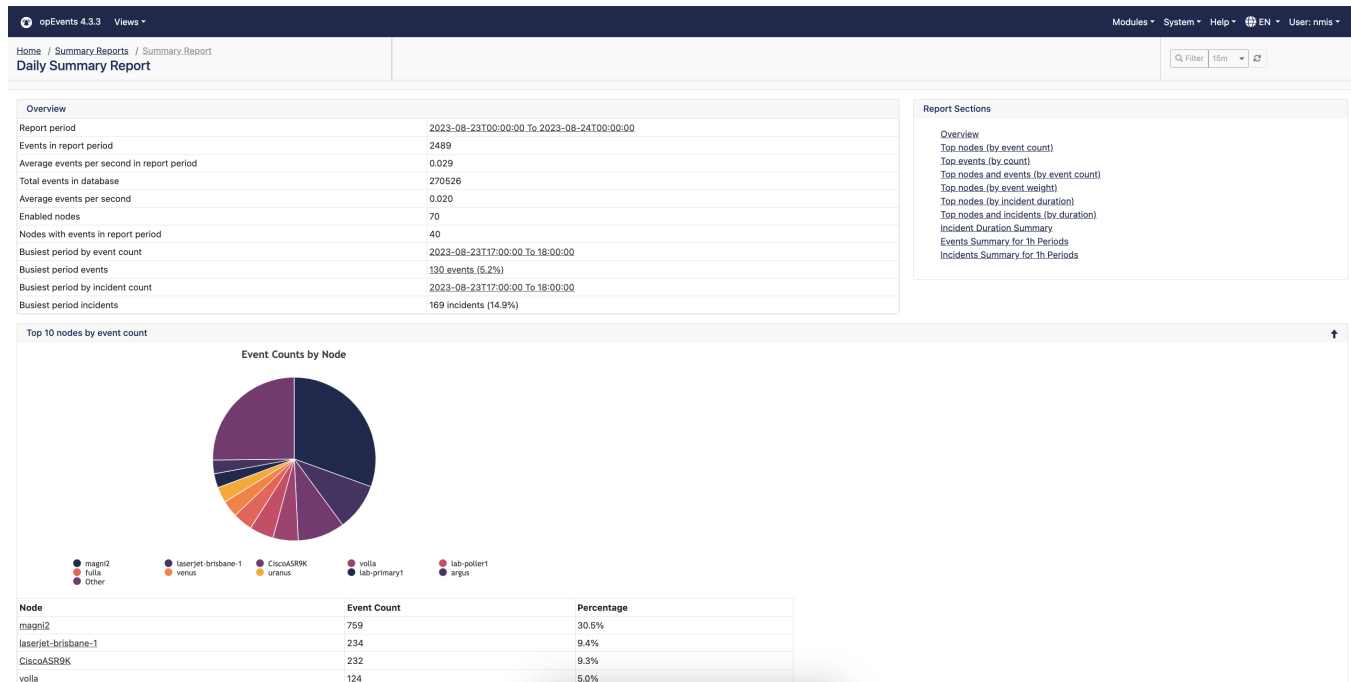
## Summary Reports

You can view a report by clicking on a link in the Title column or by Downloading and opening it with a spreadsheet application.

The Summary displays:

- An Overview of the report
- Top 10 nodes by event count
- Top 10 events by count
- Event Priorities by count
- Top 10 nodes and events by event count
- Top 10 nodes by event weight
- Top 10 nodes by incident duration
- Top 10 nodes and incidents by duration
- Incident Duration Summary
- Events Summary for 1h Periods
- Incidents Summary for 1h Periods.

For a sample full report, click [Example Summary Reports.pdf](#)



To make a report pdf like the example

1. Download the report xlsx file and open in Excel
2. Select all the worksheets by right-clicking on the Overview tab and clicking Select All Sheets.
3. On the Page Layout tab, in the Page Setup group, click Orientation, and then click Landscape.
4. On the File tab, select Print
5. Change Print Active Sheet to Print Entire Workbook
6. Change No Scaling to Fit Sheet on One Page
7. On Printer select Microsoft Print to PDF
8. Click the Print button.