

Business Services

Overview

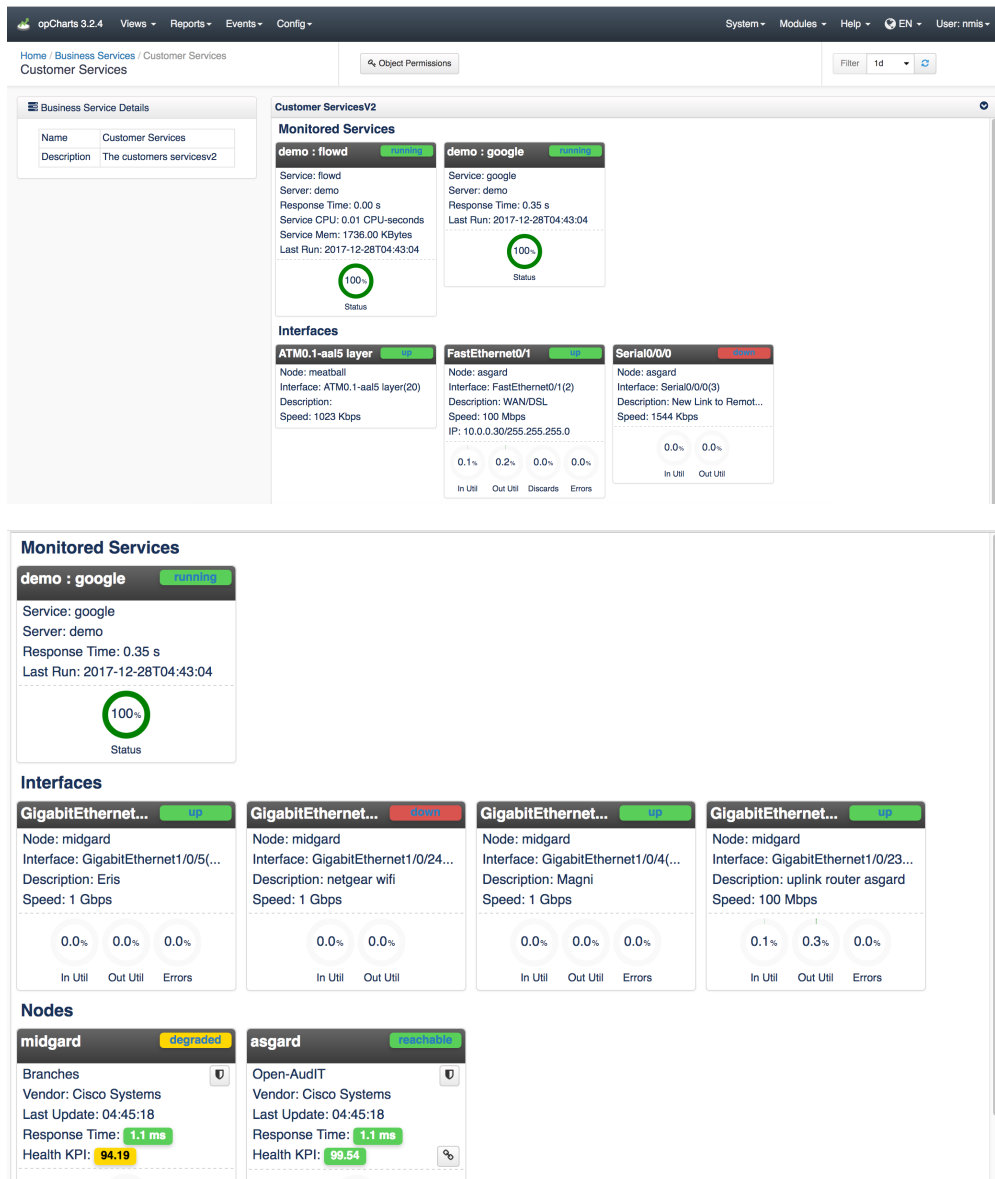
Business Services display interface status panels and node status panels in a single page. This allows grouping related interfaces/nodes together to have a single location that a user can see these related items.

Business services are supported under the MSP authorization system, so a user/role can be created to view one or more Business Services if required.

All Interfaces/Nodes added to the Business Service will be visible to any user with access to view that Business Service. The ability to view the service implies they are allowed to see all things inside. It does not imply they are allowed to view those Interfaces/Nodes on their own or in their entirety, they will only have access to this specific view.

Interfaces status panels allow MSP authorized users to click and view Interface usage over time graphs.

Some examples:



New/Edit

Join Paul McClendon, an Opmantek Support Engineer, as he demonstrates how to easily set up business service monitoring using opCharts.

To create a new Business Service go to "Views->Business Services" in the GUI menu, then click the "+" button. To edit, select the checkbox for the Business Service you would like to edit, then press the edit button (next to "+").

opCharts 3.2.4 Views Reports Events Config System Modules Help EN User: nmis

Home / Business Services Business Services Click the "+" to create a new Business Service

Filter Period

Search term Name Go X

<input type="checkbox"/>	Name	Description	Title
<input type="checkbox"/>	00Prueba		00Prueba
<input type="checkbox"/>	00_bsins	Muestra servicios para cliente GMG	00_bsins
<input type="checkbox"/>	00_buser_1	muestra servicio para cliente GMG	00_buser_1
<input type="checkbox"/>	ATP	ATP	ATP
<input type="checkbox"/>	Claro		
<input type="checkbox"/>	Customer Business Services		Customer Business Services
<input type="checkbox"/>	Customer Services	The customers servicesv2	Customer ServicesV2
<input type="checkbox"/>	CustomerA - Primary Data Center Links	The primary data center links	Primary Data Center Links
<input type="checkbox"/>	CustomerA - Primary WAN Links	The primary WAN links for customerA	Primary WAN Links
<input type="checkbox"/>	Demo System	The services for the demo system.	Demo System
<input type="checkbox"/>	Ivan Customer	Ivan's Customer Network	Ivan Customer Network
<input type="checkbox"/>	Ivan2		

opCharts 3.2.4 Views Reports Events Config System Modules Help EN User: nmis

Home / Business Services / New New Business Service Filter Period

New Business Service

Name

Desc.

Title

View

Save Cancel

Monitored Services

+

Interfaces

+

Nodes

+

Add an Interface

To add a new interface, press the "+" icon in the Interfaces section as shown in the screen shot above. Enter or select the node name, select the interface index/name and press "Add".

Select an Interface

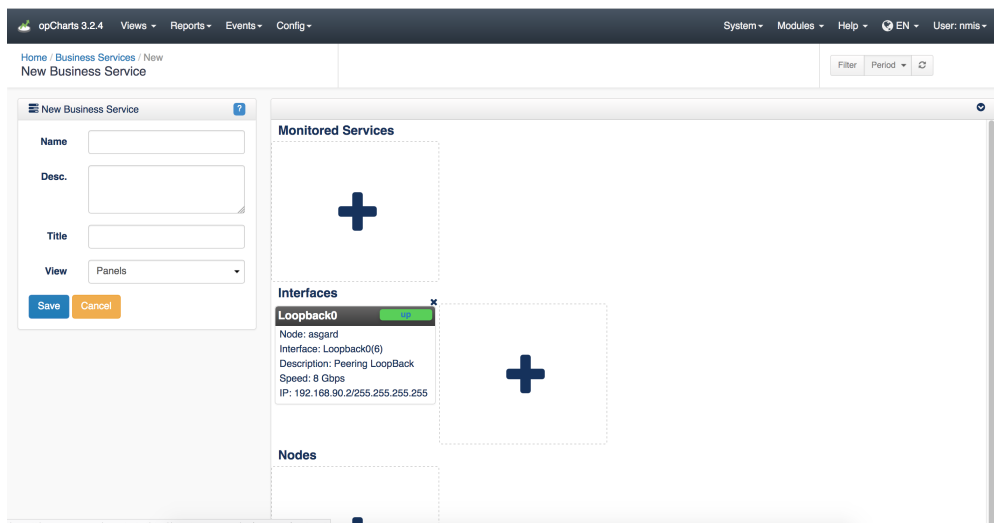
<input type="checkbox"/>	Node ▲	ifDescr	Description	IP	ifIndex	AdminStatus
<input checked="" type="checkbox"/>	asgard	Loopback0	Peering LoopBack	192.168.90.2	6	up
<input type="checkbox"/>	asgard	Dialer1194	generate a change		11	down
<input type="checkbox"/>	asgard	Serial0/0/0	New Link to Remote Office		3	down
<input type="checkbox"/>	asgard	Tunnel0	Hurricane Electric IPv6 Tunnel Broker		7	up
<input type="checkbox"/>	asgard	Tunnel99		192.168.89.1	9	down
<input type="checkbox"/>	asgard	FastEthernet0/1	WAN/DSL	10.0.0.30	2	up
<input type="checkbox"/>	asgard	Tunnel42	Connection to other locations	192.168.90.18	8	up
<input type="checkbox"/>	asgard	Null0			4	up
<input type="checkbox"/>	asgard	FastEthernet0/0	Vanderfield LAN	192.168.88.254	1	up
<input type="checkbox"/>	asgard	Tunnel100	Connection to Melbourne Lab	192.168.90.22	10	up

Showing 1 to 10 of 597 entries

« < 1 2 3 4 5 > »

Show 10 ▾

An interface panel for the selected interface should now be displayed. You can customize this however you see fit.



Add a Node

Adding a Node is similar, press the "+" icon in the Nodes section. Enter the node name and press the "Add" button, a node panel for the selected node should now be displayed.

Add a node

Node

Remove an Interface or Node

To remove either, press the "x" icon near the top right of the panel and it will be removed from the document. Save the document to accept your changes.

New Business Service ?

Name

name of new service

Desc.

Show all nodes/interfaces for customer X

Title

Customer X View

Save

Cancel

Customer X View

Interfaces

Tunnel100

up

Interface: Tunnel100(10)

Description: Connection to Oxf...

Speed: 9000

IP Address: 192.168.90.22

IP Subnet Mask: 255.255.255.252

74.47%

In Util

49.58%

Out Util

Nodes

asgard

reachable

Branches

Vendor: Cisco Systems

Last Update: 10:05:08

Response Time: 1.4 ms

Health KPI: 95.65

100%

Reachability

100%

CPU

100%

MEM

85.5%

Interface

Show

To view a Business Service simply click on the name when viewing the list of Business Services and it will be loaded. As stated above, everything will be visible to any user with access to view that Business Service.