

A single pane of glass with opCharts and NMIS

What is a single pane of glass and why is it so important?

"A single pane of glass is a management console that integrates information from multiple components into a unified display." - whatis.com

The phrase, Single Pane of Glass is often used as a synonym for dashboard.

A few of the benefits to having a single pane of glass:

Increasing visibility - Ensuring that the status of everything is visible.

Reducing operational complexity - A single place to see the status of everything.

Reducing time to root cause - No silo's, all technologies, all vendors, all operating systems in a single place.

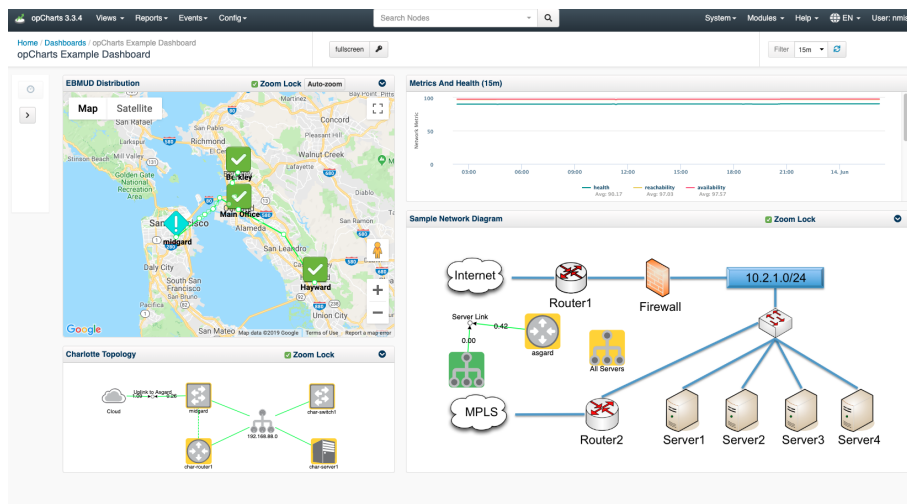
A single pane of glass is **one** management system which supports:

- Multiple vendors
- Multiple technologies
- Multiple operating systems

A single pane of glass allows for you to:

- See the current state of all systems from one place.
- See the history of all systems in one place.
- Provide operations teams with a single place to login and see what is happening.

Example of a well-designed dashboard:



How to get a Single Pane of Glass using NMIS and opCharts

First, install NMIS there are two choices in going about doing this:

1. Install NMIS from scratch.

Here is a link to an NMIS installation guide available on the Opmantek Community Wiki:

<https://community.opmantek.com/display/NMIS/NMIS+8+Installation+Guide>

2. Use the Opmantek Virtual Appliance.

Opmantek Virtual Appliance Installation guide

[Opmantek Virtual Machine: Installation and Getting Started](#)

After NMIS is installed you then need to Install/upgrade opCharts

Install/upgrade opCharts - [opCharts Installation Guide](#)

Get a free trial license key for opCharts - <https://opmantek.com/opcharts-dashboards-charts-management/>

How much data is the right amount, and how much is too much?

Before getting into creating a dashboard you should understand what goes into designing a useful dashboard.

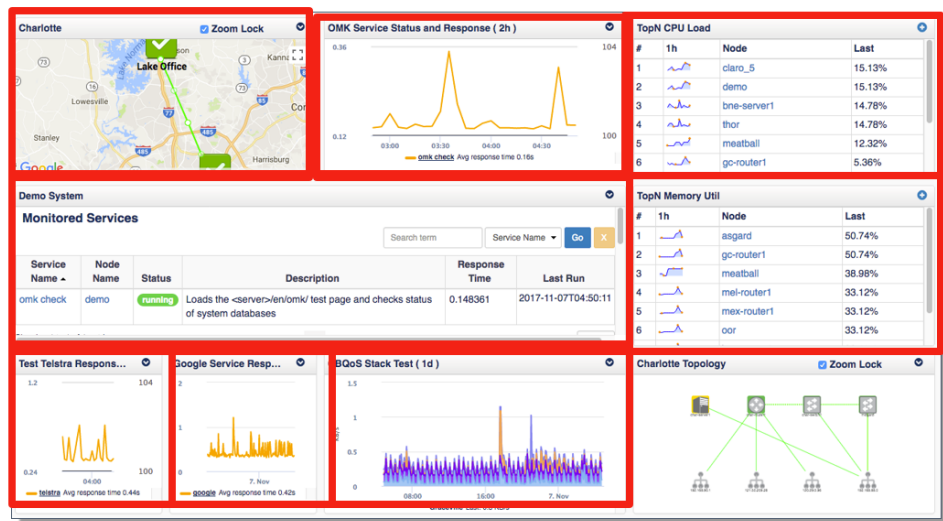
1. Limit Each Dashboard to 5-7 Groups of Data.
2. Group layout should be organized by data, time period or visualization.
3. No Group Should Have More than 5-7 Data Sets.
4. Each Data Set Should Be Easily Distinguishable from Other Data Sets in Group.
5. Similar Data Sets Across Groups Should Use Similar Colors/Icons.
6. Colors and Shapes Should Be Used with Purpose and Definition.
7. Entire dashboard should be visible at one time, as should each group.

While looking at the image below, try and understand why the dashboard is poorly designed:

Dashboards and Data Points

Find 10 Things Wrong with this Dashboard

1. Too Many Groups
2. Poor Grouping
3. Too Many Data Sets
4. Too Similar
5. Doesn't Fit
6. Requires Scrolling

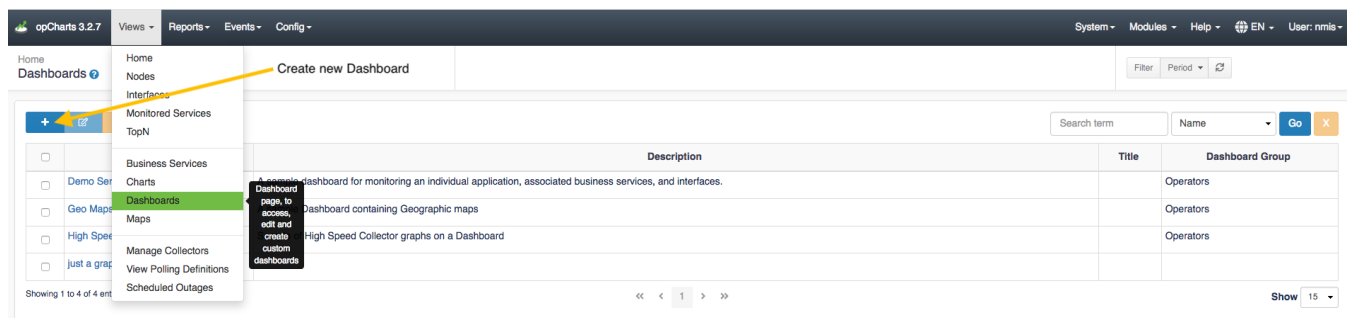


Creating your Single Pane of Glass Dashboard

Now that you understand what separates a well designed and useful dashboard from a poorly designed one it's time to create your own.

Start by creating a new dashboard:

Navigate to menu -> Views -> Dashboards



On the following screen, click the blue "+" icon to create a new dashboard

From this screen you can add data in one of two ways:

1. Go ahead and save the dashboard and give it a Name, Description, and assign it to a Dashboard Group if you would like. After this is complete, navigate to other views in opCharts that contains data you want to display on the chart. You can also begin adding components to the dashboard by clicking Add Component. A new Component Info box will open up and you can select the data you wish to display as well as change the size of the window to design the dashboard in a way you see fit.

Save Dashboard

Name

Name

Description

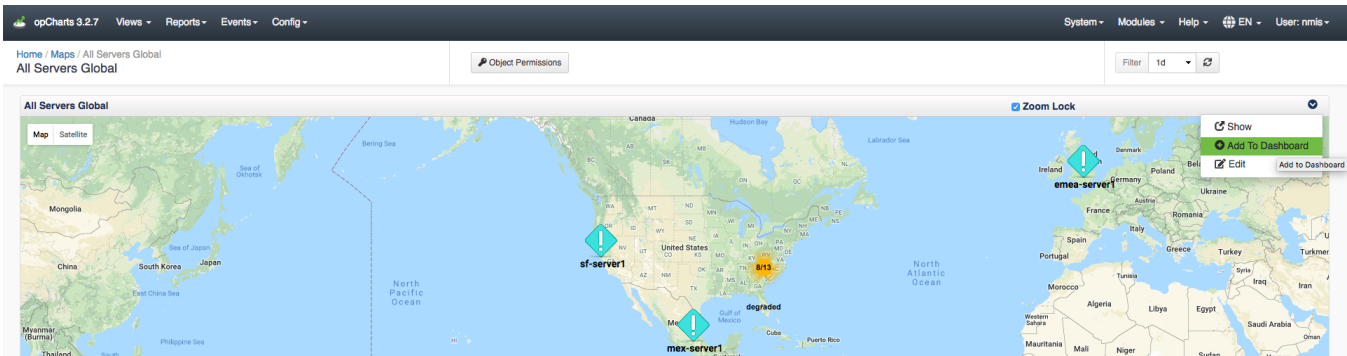
Description

Dashboard Group

Dashboard Group

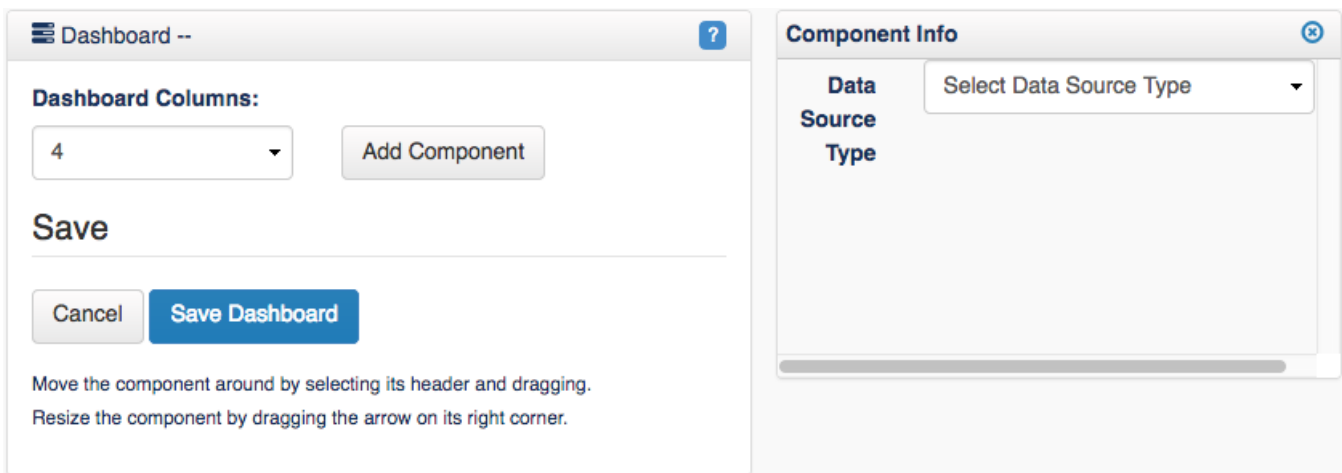
Save Dashboard

For example, you may want to add a location you created in Maps on your dashboard by navigating to menu -> Views -> Maps then selecting a previously created map. Once on the Maps screen click the drop down menu on the top right of the map and select Add to Dashboard.



The Add Component to Dashboard menu will open up, select the Dashboard Name from the drop down menu that you wish to add the Map to then click Save. Once you navigate back to your saved Dashboard this map will be displayed. You can follow this same process as adding Maps to your dashboard when adding any other desired data points.

2. The second way to accomplish designing your Single Pane of Glass Dashboard is by starting from the New Dashboard screen, click the Add Component button. This will open up a Component Info menu allowing you to adjust the Width and the Height of the component you wish to add to your dashboard. After selecting the size you want to display this information on the dashboard, click the Data Source Type drop-down menu to select the desired data for the Dashboard. Once the Data Source Type is selected, another drop-down menu will appear allowing you to choose the specific data point you want to display on the Dashboard. You can repeat this process to organize and add as many Components to your Dashboard as you want.



More information on creating Dashboards can be found below:

[Dashboards#CreatingaNewDashboard](#)

[Dashboard Design Considerations](#)

[Creating Charts with the opCharts Chart Editor](#)

[opCharts Chart#AddinganopChartsCharttoaDashboard](#)