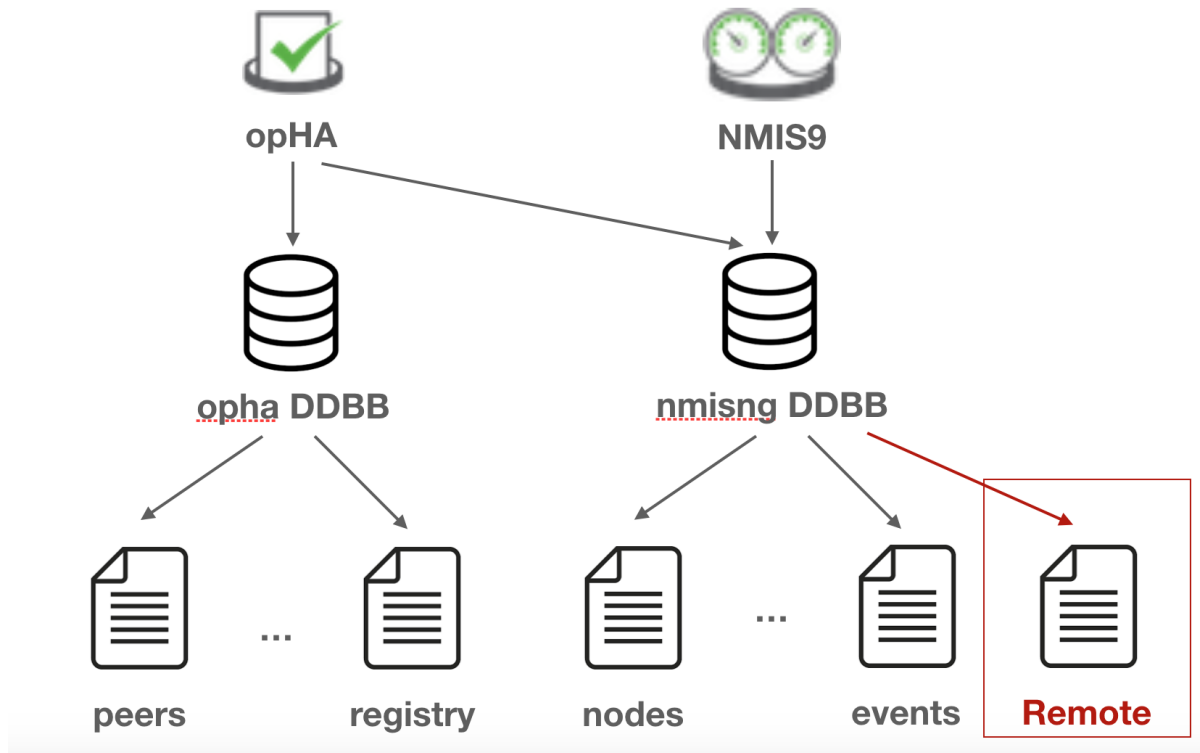


See poller nodes from the primary server

This features works better with opHA 3.0.4 and opCharts 3.0.6. We still can see the poller nodes when working with previous versions of opHA, but we are not going to be able to access the poller url.

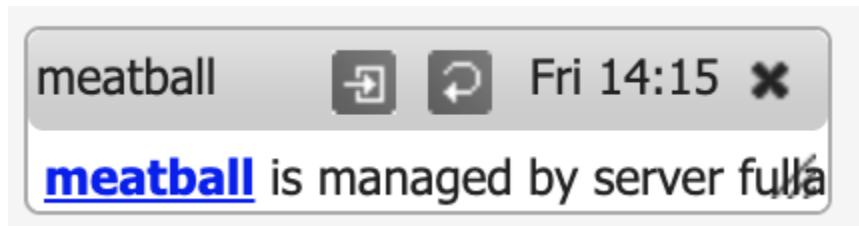
When opHA 3.0.4 synchronise a peer, is going to place in a new nmisng database collection, the information for that poller. So, NMIS can access all the information needed from the pollers.

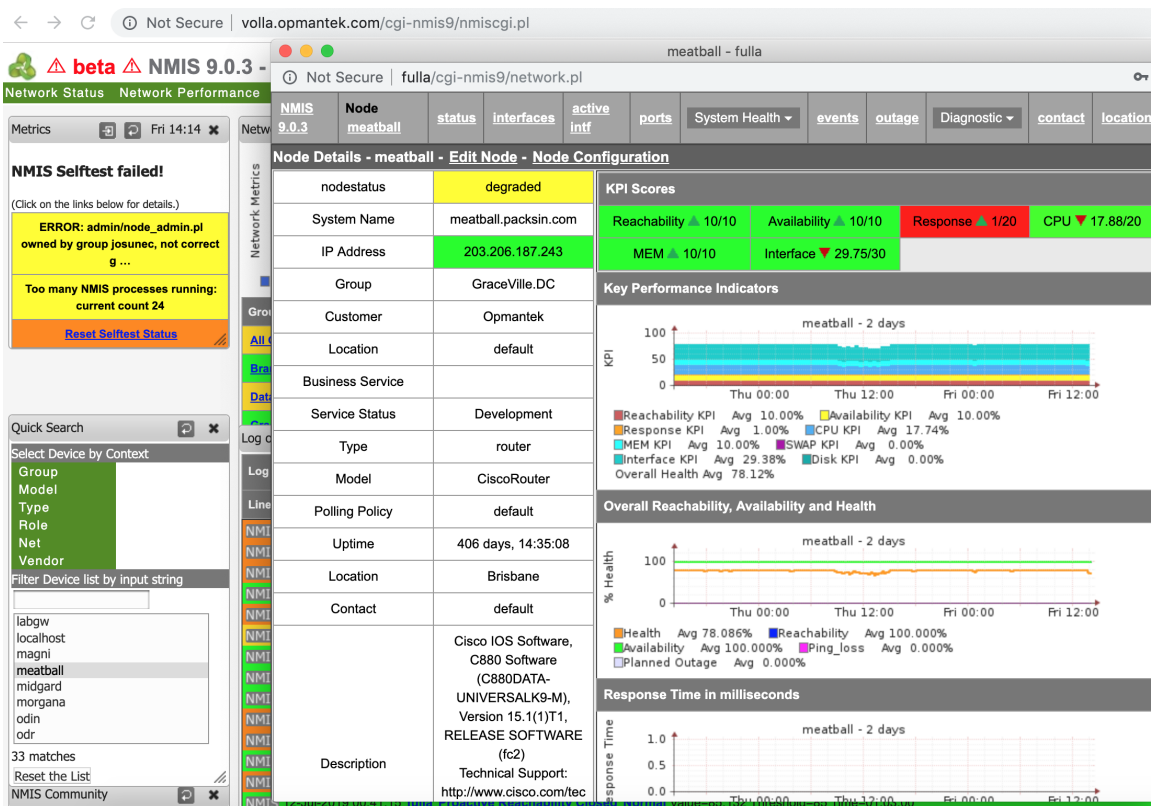


The document looks like this:

```
{
  "_id": "5d26d988860b5b04db8c4af1",
  "cluster_id": "0d28dcf0-8fe2-49d9-a26f-6ccf3f2875c0",
  "updated": "2019-07-11T06:39:16.000Z",
  "url_base": "http://poller-nine", "server_priority": 5,
  "nmis_url_base": "nmis9",
  "auth": "U2FsdGVkX19Nn5uXJ6OpyM/...",
  "nmis_cgi_url_base": "cgi-nmis9",
  "server_name": "poller-nine",
  "other_peers": []
}
```

When we click on a poller node, NMIS is going to redirect to the poller server:





If we can't see the node url properly, we need to check if the information is correct in opHA. When opHA works with a peer with an old version of opHA, some information is going to be empty.

Other considerations:

- Collect is only going to keep collecting only local nodes.
- We can manage all nodes using node_admin.

opHA 3.0.4

If we have update this version, we would need to fill this information.

We can modify this information when we edit a peer (<http://server/en/omk/opHA/peers>):

opHA 3.0.3 beta

Edit Peer

Url_base	http://fulla
Nmis_cgi_url_base	cgi-nmis9
Nmis_url_base	nmis9
Server_priority	5
Config	config

Cancel Save

opCharts 3.0.6

When running opHA 3.0.4 we will be able to see the nodes url, that it is going to redirect us to the NMIS node URL:

Home / Nodes / bnelab-p2
bnelab-p2

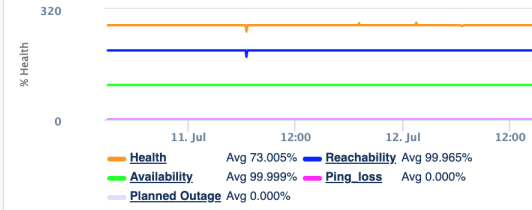
Node Performance Graphs



Node Info ?

Status	degraded
SNMP	up
WMI	up
group	bnelab
host	10.248.0.4
host_addr	
location	Cloud
nodeVendor	Cisco Systems
nodeModel	CiscoRouter
sysDescr	Cisco IOS Software, 7200 Software (C7200-SPSERVI...
Last Updated	
Uptime	282 days, 22:37:07
Managed by	fulla

Overall Reachability, Availability and Health (2d) ⌵



Topology

Zoom Lock

